



PENTHOUSE MANSIONS
PHM 01

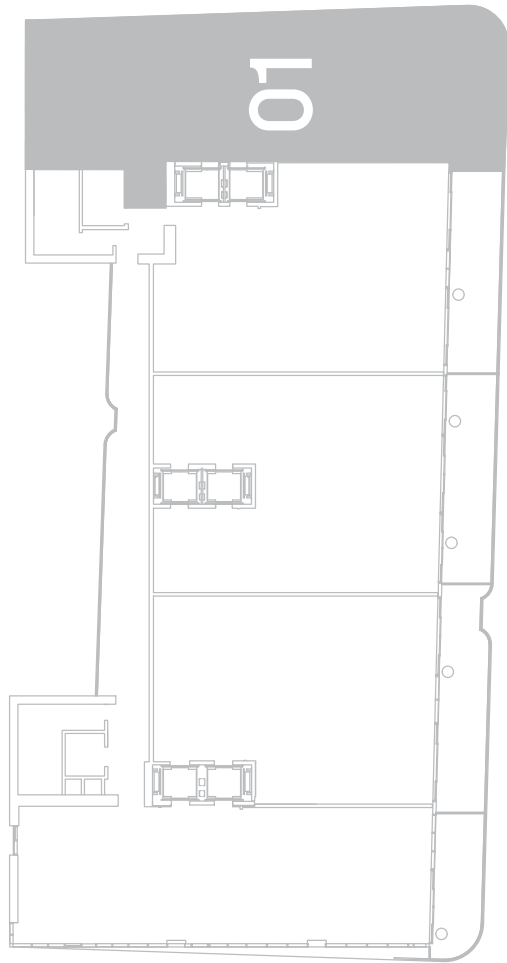


PENTHOUSE MANSIONS
LEVEL 60-62

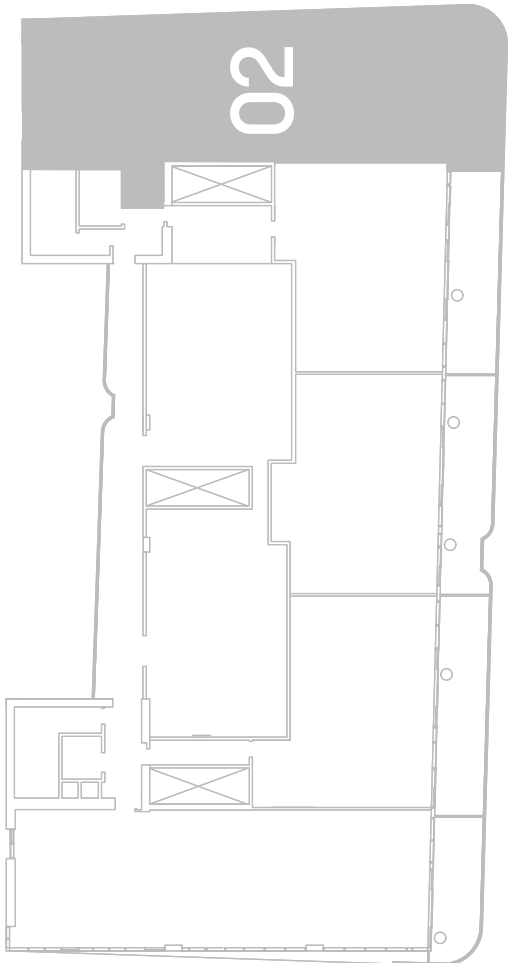
TOTAL SQ.FT.	8,309 SQ.MT.	771 SQ.MT.
A/C AREA	6,358 SQ.FT.	590 SQ.MT.
TOTAL BALCONY/TERRACE AREA	1,951 SQ.FT.	181 SQ.MT.

PHM 01

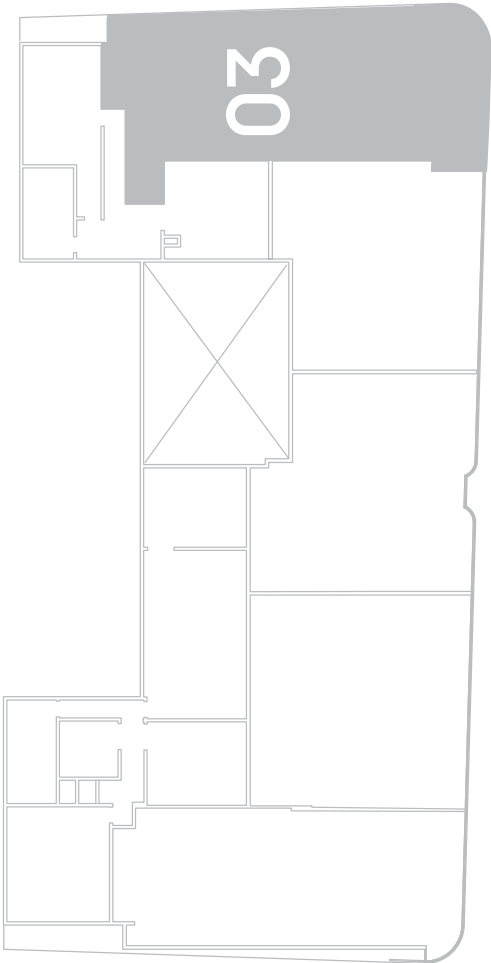
6 BEDROOMS
7^{1/2} BATHROOMS
AND DEN/GYM



BISCAYNE BAY



BISCAYNE BAY



BISCAYNE BAY



Stated square footages and dimensions are measured to the exterior boundaries of the exterior walls and the centerline of interior demising walls and in fact vary from the square footage and dimensions that would be determined by using the description and definition of the "Unit" set forth in the Declaration (which generally only includes the interior airspace between the perimeter walls and excludes all interior structural components and other common elements). For your reference, the area of the Unit, determined in accordance with these defined unit boundaries, is as set forth on Exhibit "3" to the Declaration of Condominium contained in the Prospectus. Measurements of rooms set forth on this floor plan are generally taken at the farthest points of each given room (as if the room were a perfect rectangle), without regard for any cutouts or variations. Accordingly, the area of the actual room will typically be smaller than the product obtained by multiplying the stated length and width. All dimensions are estimates which will vary with actual construction, and all floor plans, specifications and other development plans are subject to change and will not necessarily accurately reflect the final plans and specifications for the development. All depictions of appliances, counters, soffits, floor coverings, furniture and other matters of detail, including, without limitation, items of finish and decoration, are conceptual only and are not necessarily included in each Unit. ORAL REPRESENTATIONS CANNOT BE RELIED UPON AS CORRECTLY STATING THE REPRESENTATIONS OF THE DEVELOPER. FOR CORRECT REPRESENTATIONS, REFERENCE SHOULD BE MADE TO THE DOCUMENTS REQUIRED BY SECTION 718.503, FLORIDA STATUTES, TO BE FURNISHED BY A DEVELOPER TO A BUYER OR LESSEE. These materials are not intended to be an offer to sell, or solicitation to buy a unit in the condominium. FOR NY RESIDENTS ONLY, SEE CPS-12 OFFERING PLAN FOR ADDITIONAL TERMS. FILE NO. CP18-0139. Floor plan not to scale.

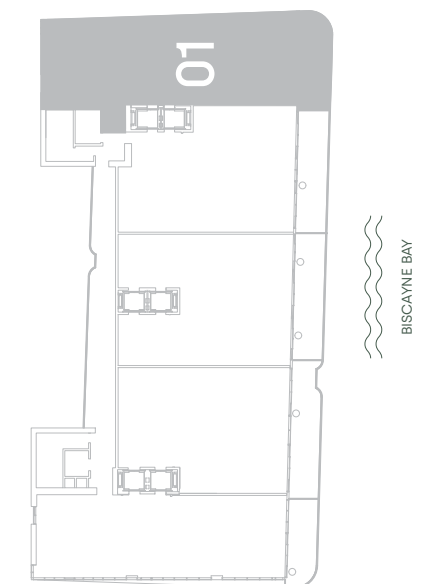
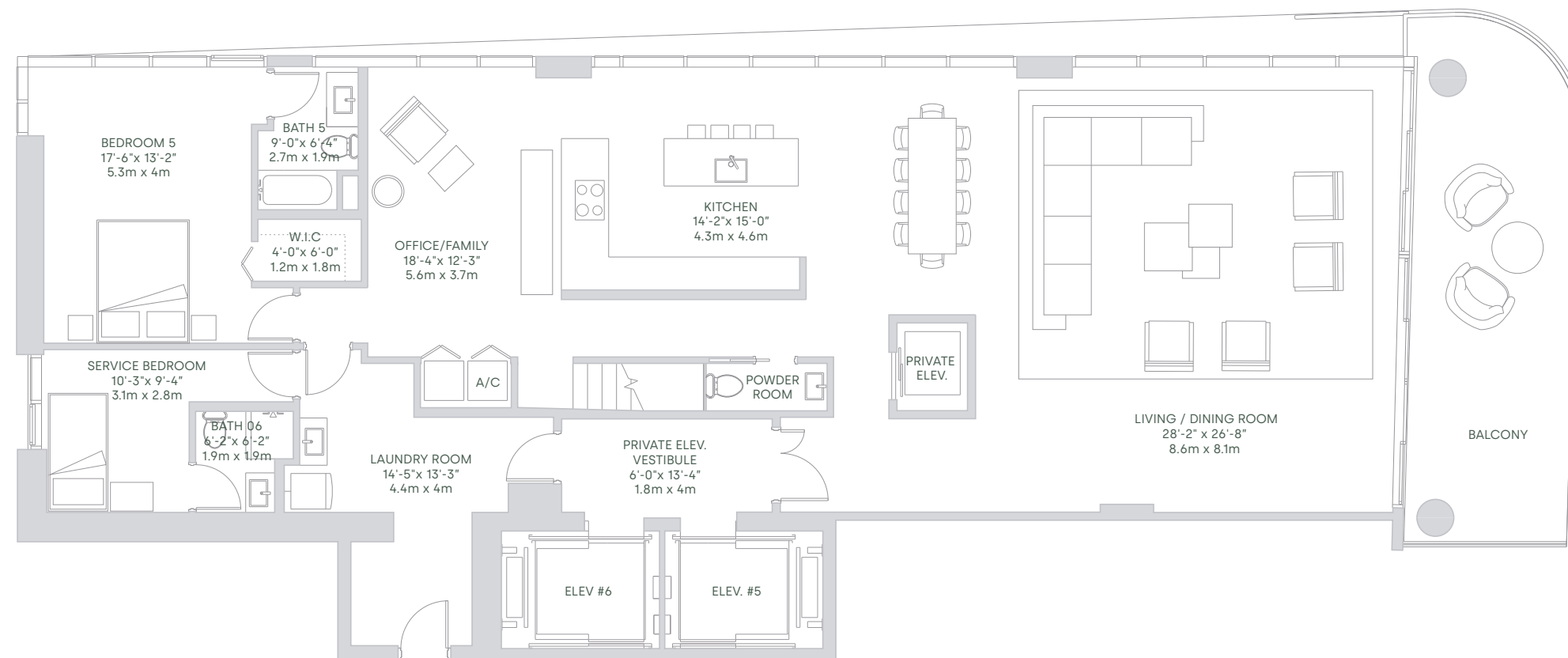


PENTHOUSE MANSIONS
LEVEL 60-62

TOTAL SQ.FT.	8,309 SQ.MT.	771 SQ.MT.
A/C AREA	6,358 SQ.FT.	590 SQ.MT.
TOTAL BALCONY/TERRACE AREA	1,951 SQ.FT.	181 SQ.MT.

PHM 01
LEVEL 01

6 BEDROOMS
7^{1/2} BATHROOMS
AND DEN/GYM



Stated square footages and dimensions are measured to the exterior boundaries of the exterior walls and the centerline of interior demising walls and in fact vary from the square footage and dimensions that would be determined by using the description and definition of the "Unit" set forth in the Declaration (which generally only includes the interior airspace between the perimeter walls and excludes all interior structural components and other common elements). For your reference, the area of the Unit, determined in accordance with these defined unit boundaries, is as set forth on Exhibit "3" to the Declaration of Condominium contained in the Prospectus. Measurements of rooms set forth on this floor plan are generally taken at the farthest points of each given room (as if the room were a perfect rectangle), without regard for any cutouts or variations. Accordingly, the area of the actual room will typically be smaller than the product obtained by multiplying the stated length and width. All dimensions are estimates which will vary with actual construction, and all floor plans, specifications and other development plans are subject to change and will not necessarily accurately reflect the final plans and specifications for the development. All depictions of appliances, counters, soffits, floor coverings, furniture and other matters of detail, including, without limitation, items of finish and decoration, are conceptual only and are not necessarily included in each Unit. ORAL REPRESENTATIONS CANNOT BE RELIED UPON AS CORRECTLY STATING THE REPRESENTATIONS OF THE DEVELOPER. FOR CORRECT REPRESENTATIONS, REFERENCE SHOULD BE MADE TO THE DOCUMENTS REQUIRED BY SECTION 718.503, FLORIDA STATUTES, TO BE FURNISHED BY A DEVELOPER TO A BUYER OR LESSEE. These materials are not intended to be an offer to sell, or solicitation to buy a unit in the condominium. FOR NY RESIDENTS ONLY, SEE CPS-12 OFFERING PLAN FOR ADDITIONAL TERMS. FILE NO. CP18-0139. Floor plan not to scale.



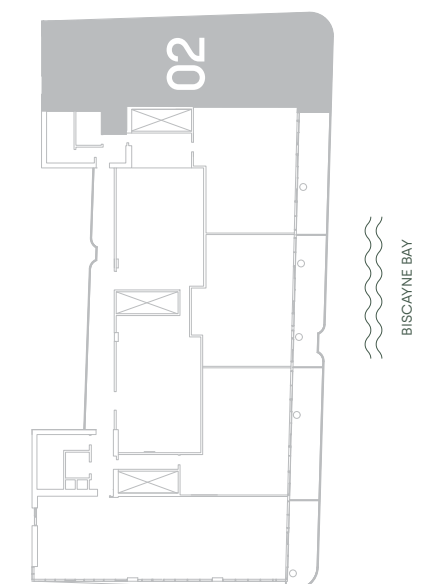
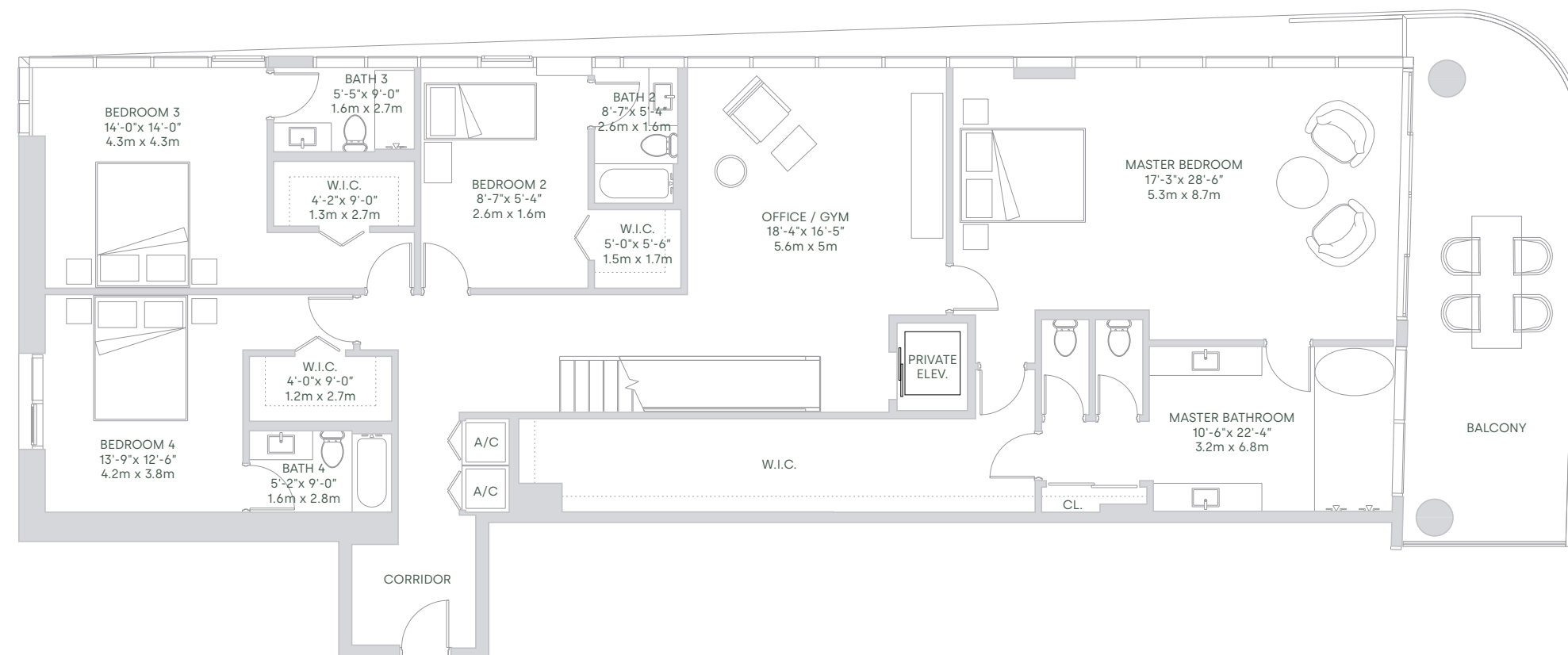
PENTHOUSE MANSIONS
LEVEL 60-62

TOTAL SQ.FT.	8,309 SQ.MT.	771 SQ.MT.
A/C AREA	6,358 SQ.FT.	590 SQ.MT.
TOTAL BALCONY/TERRACE AREA	1,951 SQ.FT.	181 SQ.MT.

PHM 01

LEVEL 02

6 BEDROOMS
7^{1/2} BATHROOMS
AND DEN/GYM



Stated square footages and dimensions are measured to the exterior boundaries of the exterior walls and the centerline of interior demising walls and in fact vary from the square footage and dimensions that would be determined by using the description and definition of the "Unit" set forth in the Declaration (which generally only includes the interior airspace between the perimeter walls and excludes all interior structural components and other common elements). For your reference, the area of the Unit, determined in accordance with these defined unit boundaries, is as set forth on Exhibit "3" to the Declaration of Condominium contained in the Prospectus. Measurements of rooms set forth on this floor plan are generally taken at the farthest points of each given room (as if the room were a perfect rectangle), without regard for any cutouts or variations. Accordingly, the area of the actual room will typically be smaller than the product obtained by multiplying the stated length and width. All dimensions are estimates which will vary with actual construction, and all floor plans, specifications and other development plans are subject to change and will not necessarily accurately reflect the final plans and specifications for the development. All depictions of appliances, counters, soffits, floor coverings, furniture and other matters of detail, including, without limitation, items of finish and decoration, are conceptual only and are not necessarily included in each Unit. ORAL REPRESENTATIONS CANNOT BE RELIED UPON AS CORRECTLY STATING THE REPRESENTATIONS OF THE DEVELOPER. FOR CORRECT REPRESENTATIONS, REFERENCE SHOULD BE MADE TO THE DOCUMENTS REQUIRED BY SECTION 718.503, FLORIDA STATUTES, TO BE FURNISHED BY A DEVELOPER TO A BUYER OR LESSEE. These materials are not intended to be an offer to sell, or solicitation to buy a unit in the condominium. FOR NY RESIDENTS ONLY, SEE CPS-12 OFFERING PLAN FOR ADDITIONAL TERMS. FILE NO. CP18-0139. Floor plan not to scale.



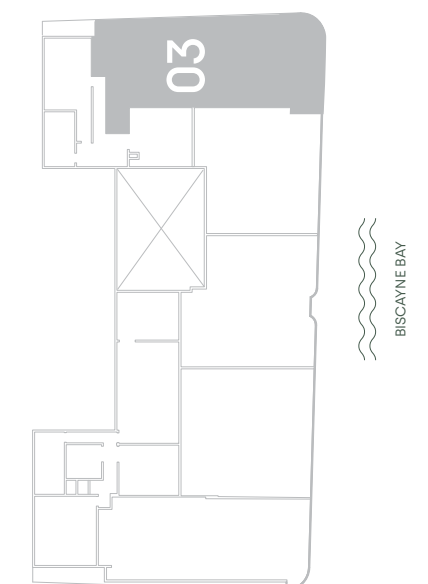
PENTHOUSE MANSIONS
LEVEL 60-62

TOTAL SQ.FT.	8,309 SQ.MT.	771 SQ.MT.
A/C AREA	6,358 SQ.FT.	590 SQ.MT.
TOTAL BALCONY/TERRACE AREA	1,951 SQ.FT.	181 SQ.MT.

PHM 01

LEVEL 03

6 BEDROOMS
7^{1/2} BATHROOMS
AND DEN/GYM



Stated square footages and dimensions are measured to the exterior boundaries of the exterior walls and the centerline of interior demising walls and in fact vary from the square footage and dimensions that would be determined by using the description and definition of the "Unit" set forth in the Declaration (which generally only includes the interior airspace between the perimeter walls and excludes all interior structural components and other common elements). For your reference, the area of the Unit, determined in accordance with these defined unit boundaries, is as set forth on Exhibit "3" to the Declaration of Condominium contained in the Prospectus. Measurements of rooms set forth on this floor plan are generally taken at the farthest points of each given room (as if the room were a perfect rectangle), without regard for any cutouts or variations. Accordingly, the area of the actual room will typically be smaller than the product obtained by multiplying the stated length and width. All dimensions are estimates which will vary with actual construction, and all floor plans, specifications and other development plans are subject to change and will not necessarily accurately reflect the final plans and specifications for the development. All depictions of appliances, counters, soffits, floor coverings, furniture and other matters of detail, including, without limitation, items of finish and decoration, are conceptual only and are not necessarily included in each Unit. ORAL REPRESENTATIONS CANNOT BE RELIED UPON AS CORRECTLY STATING THE REPRESENTATIONS OF THE DEVELOPER. FOR CORRECT REPRESENTATIONS, REFERENCE SHOULD BE MADE TO THE DOCUMENTS REQUIRED BY SECTION 718.503, FLORIDA STATUTES, TO BE FURNISHED BY A DEVELOPER TO A BUYER OR LESSEE. These materials are not intended to be an offer to sell, or solicitation to buy a unit in the condominium. FOR NY RESIDENTS ONLY, SEE CPS-12 OFFERING PLAN FOR ADDITIONAL TERMS. FILE NO. CP18-0139. Floor plan not to scale.



PENTHOUSE MANSIONS

PHM 02

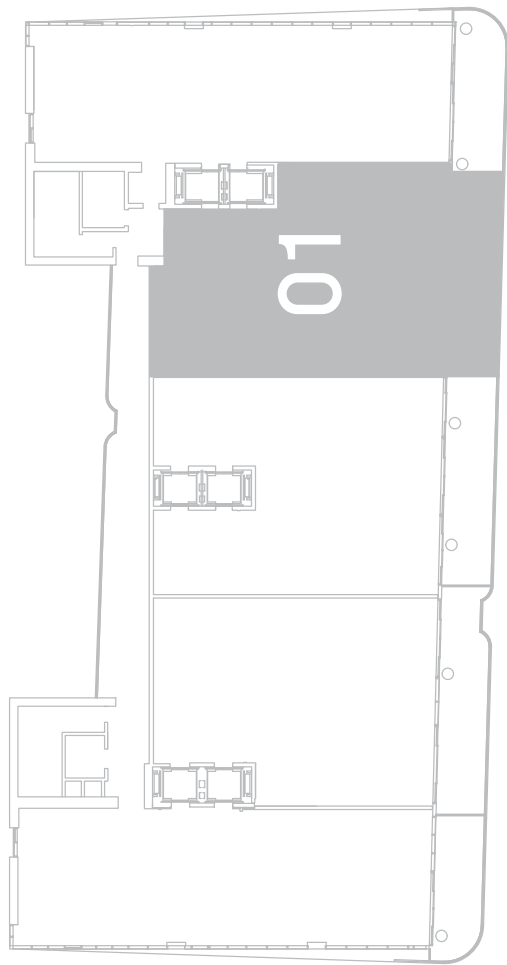


PENTHOUSE MANSIONS
LEVEL 60-62

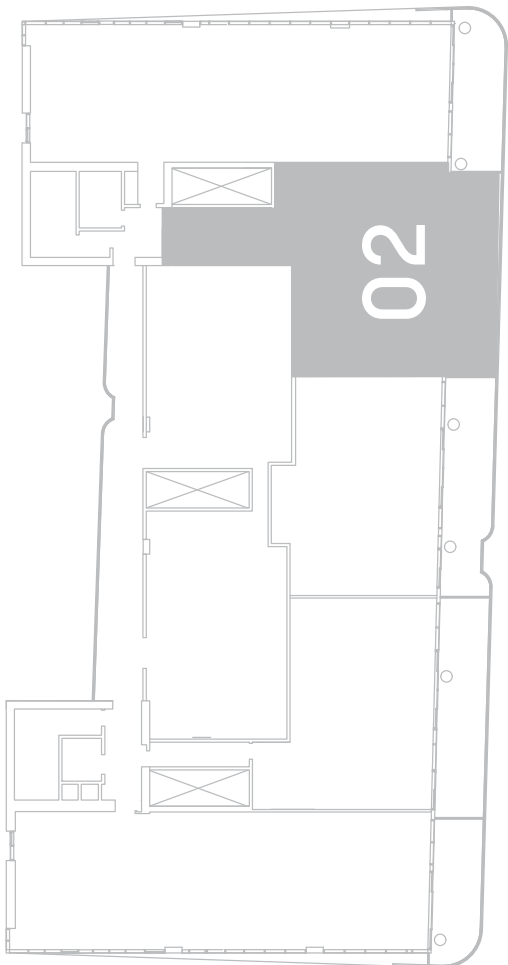
TOTAL SQ.FT.	6,592 SQ.MT.	612 SQ.MT.
A/C AREA	4,676 SQ.FT.	434 SQ.MT.
TOTAL BALCONY/TERRACE AREA	1,916 SQ.FT.	178 SQ.MT.

PHM 02

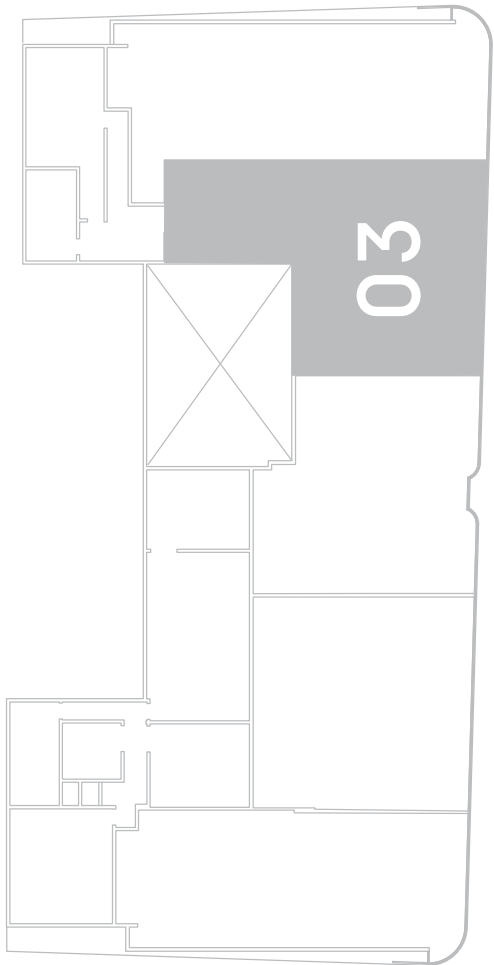
4 BEDROOMS
6.5 BATHROOMS
AND DEN



BISCAYNE BAY



BISCAYNE BAY



BISCAYNE BAY



Stated square footages and dimensions are measured to the exterior boundaries of the exterior walls and the centerline of interior demising walls and in fact vary from the square footage and dimensions that would be determined by using the description and definition of the "Unit" set forth in the Declaration (which generally only includes the interior airspace between the perimeter walls and excludes all interior structural components and other common elements). For your reference, the area of the Unit, determined in accordance with these defined unit boundaries, is as set forth on Exhibit "3" to the Declaration of Condominium contained in the Prospectus. Measurements of rooms set forth on this floor plan are generally taken at the farthest points of each given room (as if the room were a perfect rectangle), without regard for any cutouts or variations. Accordingly, the area of the actual room will typically be smaller than the product obtained by multiplying the stated length and width. All dimensions are estimates which will vary with actual construction, and all floor plans, specifications and other development plans are subject to change and will not necessarily accurately reflect the final plans and specifications for the development. All depictions of appliances, counters, soffits, floor coverings, furniture and other matters of detail, including, without limitation, items of finish and decoration, are conceptual only and are not necessarily included in each Unit. ORAL REPRESENTATIONS CANNOT BE RELIED UPON AS CORRECTLY STATING THE REPRESENTATIONS OF THE DEVELOPER. FOR CORRECT REPRESENTATIONS, REFERENCE SHOULD BE MADE TO THE DOCUMENTS REQUIRED BY SECTION 718.503, FLORIDA STATUTES, TO BE FURNISHED BY A DEVELOPER TO A BUYER OR LESSEE. These materials are not intended to be an offer to sell, or solicitation to buy a unit in the condominium. FOR NY RESIDENTS ONLY, SEE CPS-12 OFFERING PLAN FOR ADDITIONAL TERMS. FILE NO. CP18-0139. Floor plan not to scale.



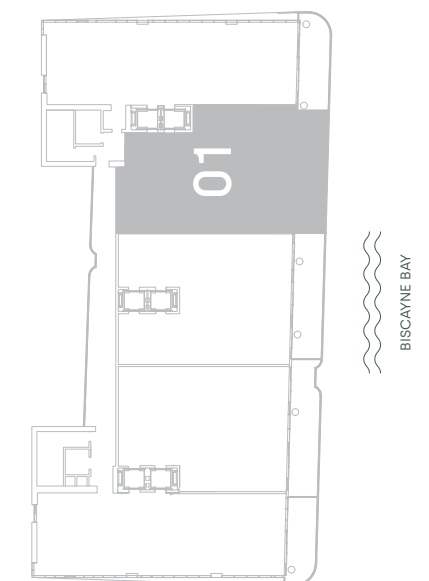
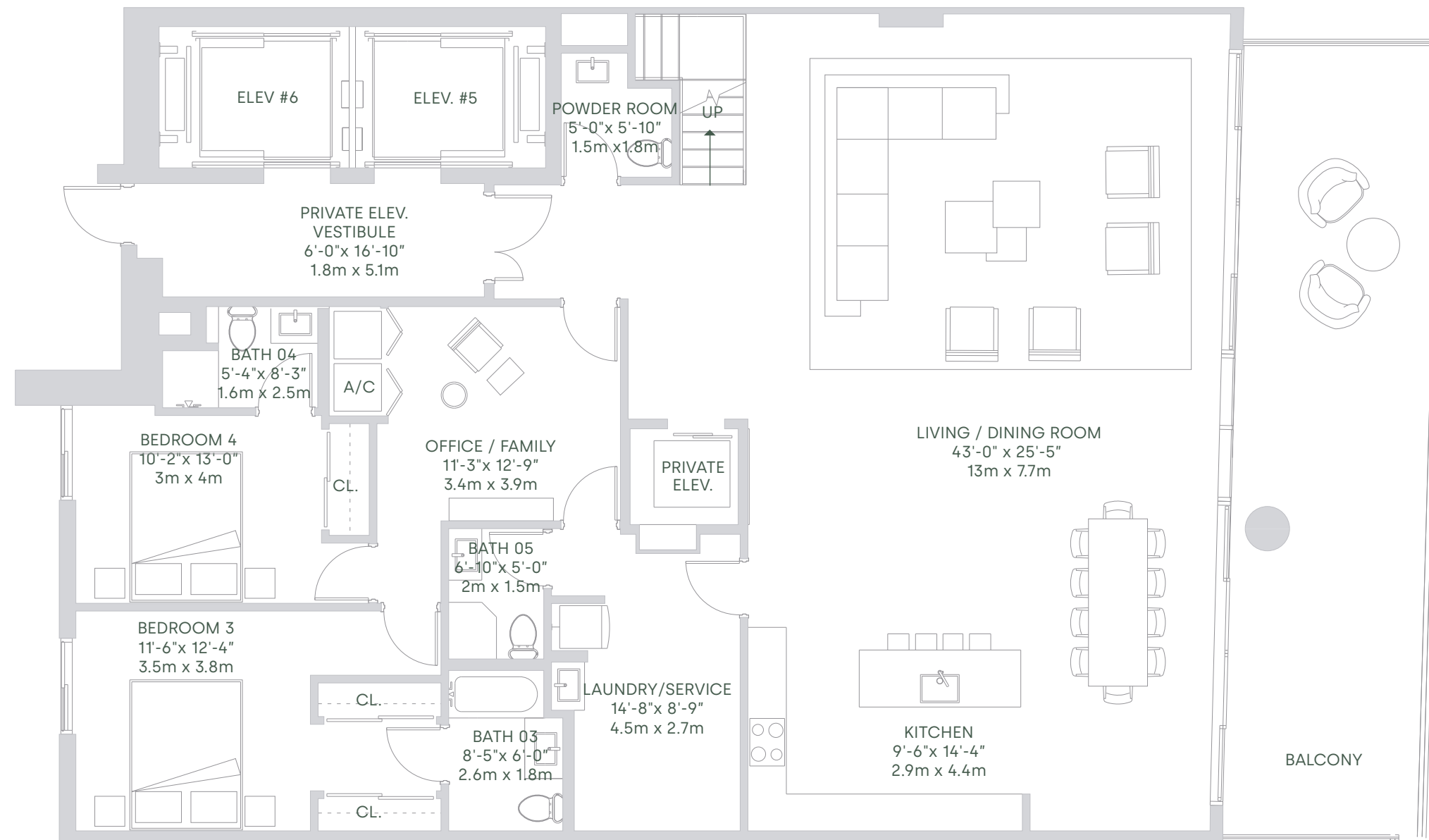
PENTHOUSE MANSIONS
LEVEL 60-62

TOTAL SQ.FT.	6,592 SQ.MT.	612 SQ.MT.
A/C AREA	4,676 SQ.FT.	434 SQ.MT.
TOTAL BALCONY/TERRACE AREA	1,916 SQ.FT.	178 SQ.MT.

PHM 02

LEVEL 01

4 BEDROOMS
6.5 BATHROOMS
AND DEN



Stated square footages and dimensions are measured to the exterior boundaries of the exterior walls and the centerline of interior demising walls and in fact vary from the square footage and dimensions that would be determined by using the description and definition of the "Unit" set forth in the Declaration (which generally only includes the interior airspace between the perimeter walls and excludes all interior structural components and other common elements). For your reference, the area of the Unit, determined in accordance with these defined unit boundaries, is as set forth on Exhibit "3" to the Declaration of Condominium contained in the Prospectus. Measurements of rooms set forth on this floor plan are generally taken at the farthest points of each given room (as if the room were a perfect rectangle), without regard for any cutouts or variations. Accordingly, the area of the actual room will typically be smaller than the product obtained by multiplying the stated length and width. All dimensions are estimates which will vary with actual construction, and all floor plans, specifications and other development plans are subject to change and will not necessarily accurately reflect the final plans and specifications for the development. All depictions of appliances, counters, soffits, floor coverings, furniture and other matters of detail, including, without limitation, items of finish and decoration, are conceptual only and are not necessarily included in each Unit. ORAL REPRESENTATIONS CANNOT BE RELIED UPON AS CORRECTLY STATING THE REPRESENTATIONS OF THE DEVELOPER. FOR CORRECT REPRESENTATIONS, REFERENCE SHOULD BE MADE TO THE DOCUMENTS REQUIRED BY SECTION 718.503, FLORIDA STATUTES, TO BE FURNISHED BY A DEVELOPER TO A BUYER OR LESSEE. These materials are not intended to be an offer to sell, or solicitation to buy a unit in the condominium. FOR NY RESIDENTS ONLY, SEE CPS-12 OFFERING PLAN FOR ADDITIONAL TERMS. FILE NO. CP18-0139. Floor plan not to scale.



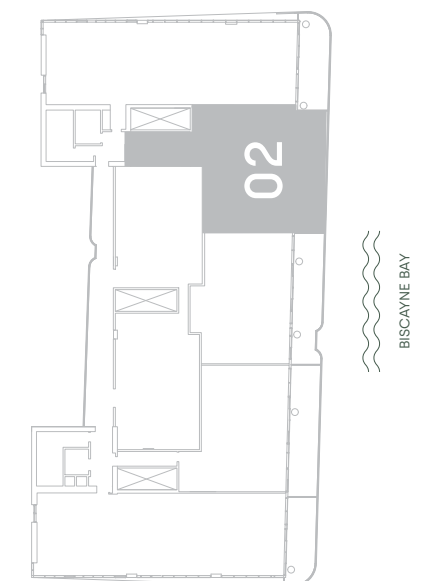
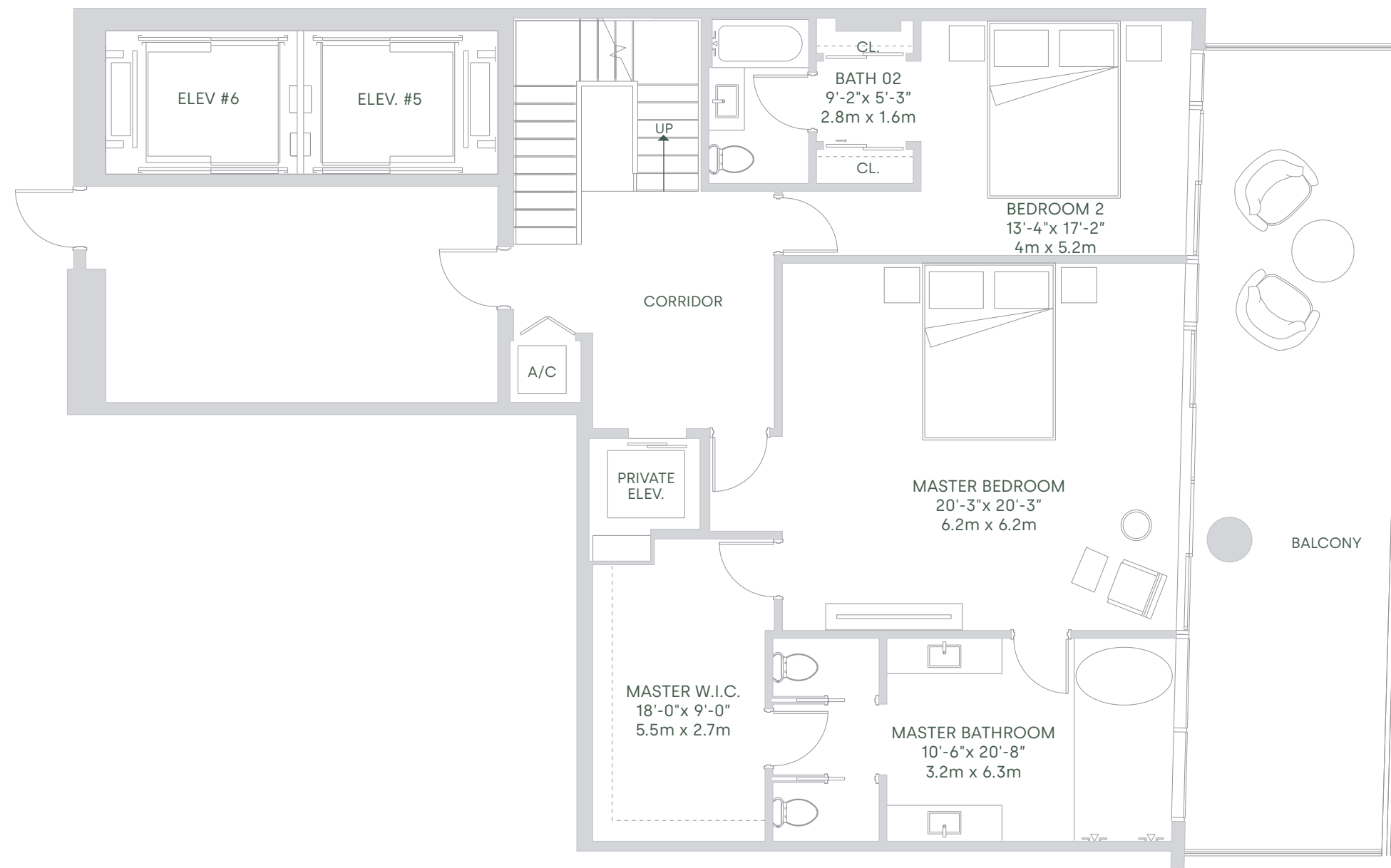
PENTHOUSE MANSIONS
LEVEL 60-62

TOTAL SQ.FT.	6,592 SQ.MT.	612 SQ.MT.
A/C AREA	4,676 SQ.FT.	434 SQ.MT.
TOTAL BALCONY/TERRACE AREA	1,916 SQ.FT.	178 SQ.MT.

PHM 02

LEVEL 02

4 BEDROOMS
6.5 BATHROOMS
AND DEN



Stated square footages and dimensions are measured to the exterior boundaries of the exterior walls and the centerline of interior demising walls and in fact vary from the square footage and dimensions that would be determined by using the description and definition of the "Unit" set forth in the Declaration (which generally only includes the interior airspace between the perimeter walls and excludes all interior structural components and other common elements). For your reference, the area of the Unit, determined in accordance with these defined unit boundaries, is as set forth on Exhibit "3" to the Declaration of Condominium contained in the Prospectus. Measurements of rooms set forth on this floor plan are generally taken at the farthest points of each given room (as if the room were a perfect rectangle), without regard for any cutouts or variations. Accordingly, the area of the actual room will typically be smaller than the product obtained by multiplying the stated length and width. All dimensions are estimates which will vary with actual construction, and all floor plans, specifications and other development plans are subject to change and will not necessarily accurately reflect the final plans and specifications for the development. All depictions of appliances, counters, soffits, floor coverings, furniture and other matters of detail, including, without limitation, items of finish and decoration, are conceptual only and are not necessarily included in each Unit. ORAL REPRESENTATIONS CANNOT BE RELIED UPON AS CORRECTLY STATING THE REPRESENTATIONS OF THE DEVELOPER. FOR CORRECT REPRESENTATIONS, REFERENCE SHOULD BE MADE TO THE DOCUMENTS REQUIRED BY SECTION 718.503, FLORIDA STATUTES, TO BE FURNISHED BY A DEVELOPER TO A BUYER OR LESSEE. These materials are not intended to be an offer to sell, or solicitation to buy a unit in the condominium. FOR NY RESIDENTS ONLY, SEE CPS-12 OFFERING PLAN FOR ADDITIONAL TERMS. FILE NO. CP18-0139. Floor plan not to scale.



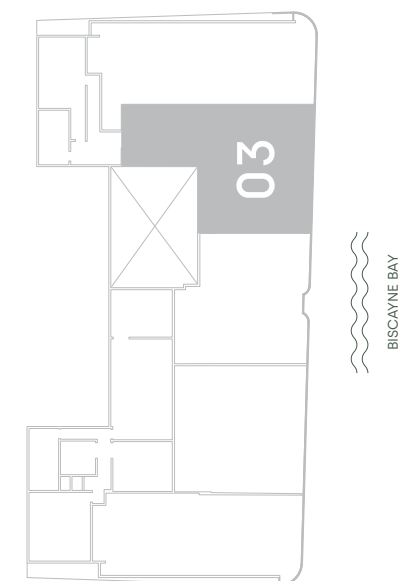
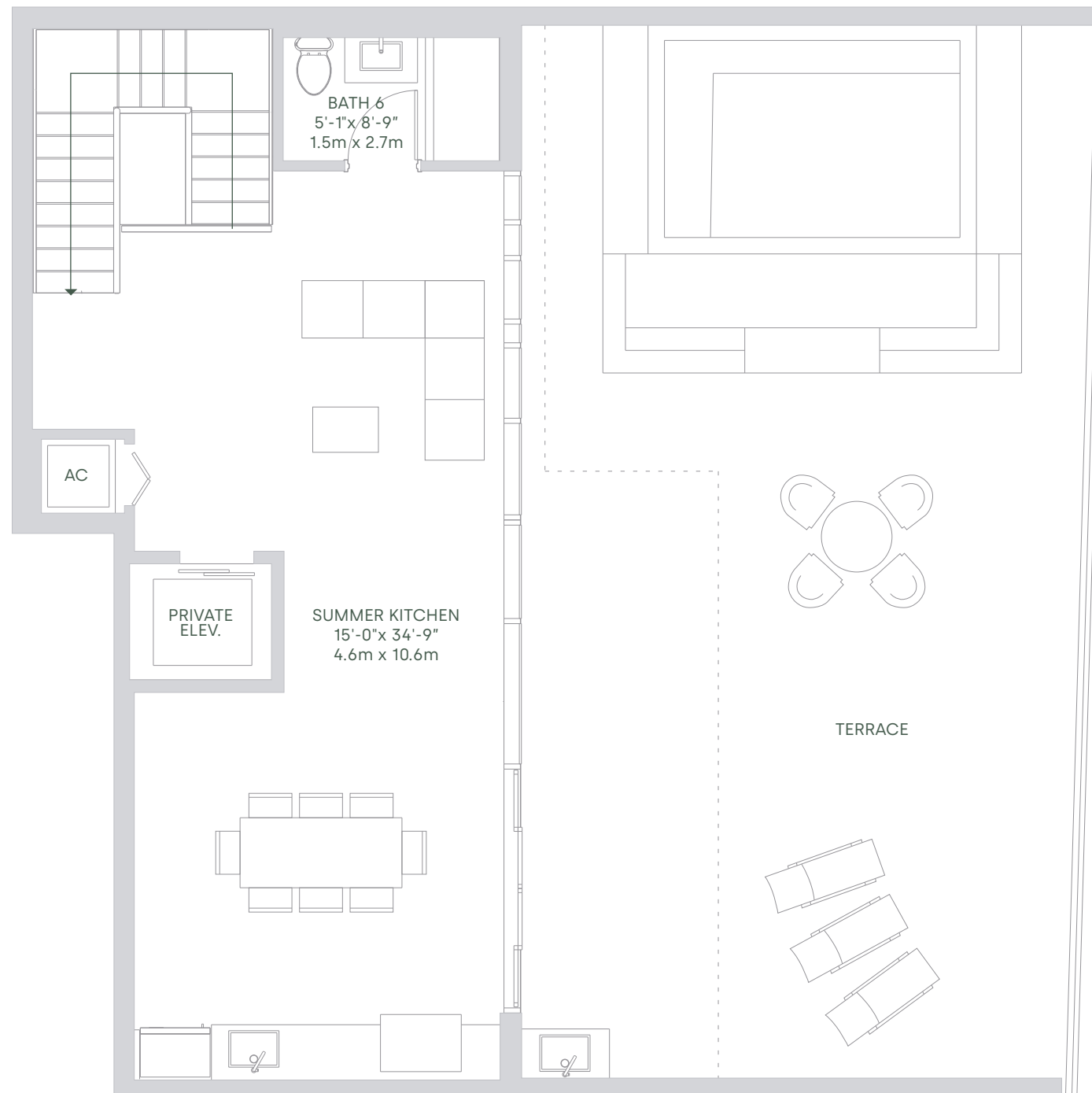
PHM 02

LEVEL 03

4 BEDROOMS
6.5 BATHROOMS
AND DEN

PENTHOUSE MANSIONS
LEVEL 60-62

TOTAL SQ.FT.	6,592 SQ.MT.	612 SQ.MT.
A/C AREA	4,676 SQ.FT.	434 SQ.MT.
TOTAL BALCONY/TERRACE AREA	1,916 SQ.FT.	178 SQ.MT.



Stated square footages and dimensions are measured to the exterior boundaries of the exterior walls and the centerline of interior demising walls and in fact vary from the square footage and dimensions that would be determined by using the description and definition of the "Unit" set forth in the Declaration (which generally only includes the interior airspace between the perimeter walls and excludes all interior structural components and other common elements). For your reference, the area of the Unit, determined in accordance with these defined unit boundaries, is as set forth on Exhibit "3" to the Declaration of Condominium contained in the Prospectus. Measurements of rooms set forth on this floor plan are generally taken at the farthest points of each given room (as if the room were a perfect rectangle), without regard for any cutouts or variations. Accordingly, the area of the actual room will typically be smaller than the product obtained by multiplying the stated length and width. All dimensions are estimates which will vary with actual construction, and all floor plans, specifications and other development plans are subject to change and will not necessarily accurately reflect the final plans and specifications for the development. All depictions of appliances, counters, soffits, floor coverings, furniture and other matters of detail, including, without limitation, items of finish and decoration, are conceptual only and are not necessarily included in each Unit. ORAL REPRESENTATIONS CANNOT BE RELIED UPON AS CORRECTLY STATING THE REPRESENTATIONS OF THE DEVELOPER. FOR CORRECT REPRESENTATIONS, REFERENCE SHOULD BE MADE TO THE DOCUMENTS REQUIRED BY SECTION 718.503, FLORIDA STATUTES, TO BE FURNISHED BY A DEVELOPER TO A BUYER OR LESSEE. These materials are not intended to be an offer to sell, or solicitation to buy a unit in the condominium. FOR NY RESIDENTS ONLY, SEE CPS-12 OFFERING PLAN FOR ADDITIONAL TERMS. FILE NO. CP18-0139. Floor plan not to scale.



PENTHOUSE MANSIONS
PHM 03

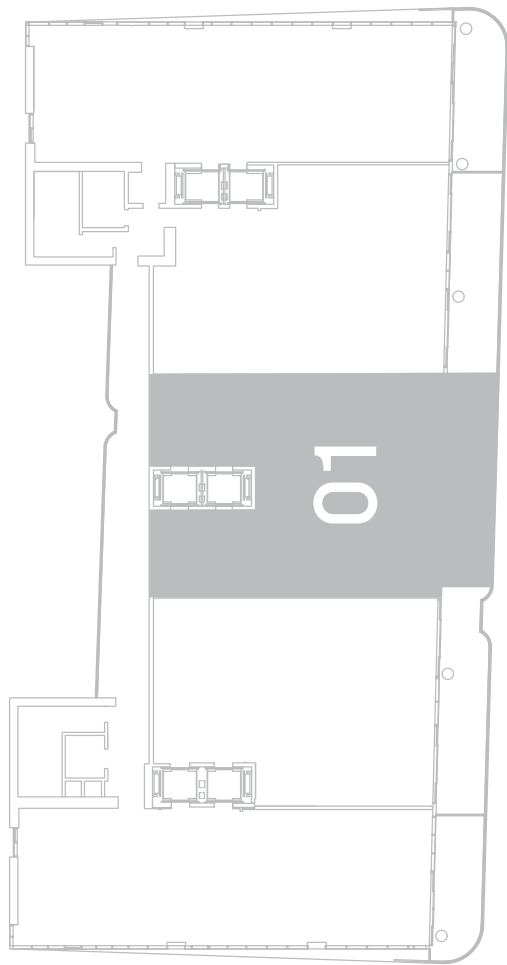


PENTHOUSES MANSIONS
LEVEL 60-62

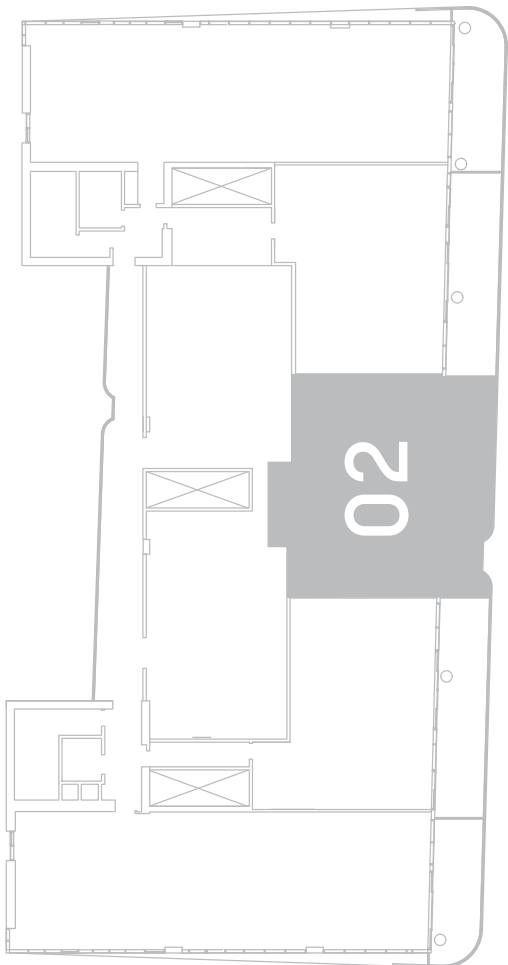
TOTAL SQ.FT.	6,917 SQ.MT.	642 SQ.MT.
A/C AREA	5,010 SQ.FT.	465 SQ.MT.
TOTAL BALCONY/TERRACE AREA	1,907 SQ.FT.	177 SQ.MT.

PHM 03

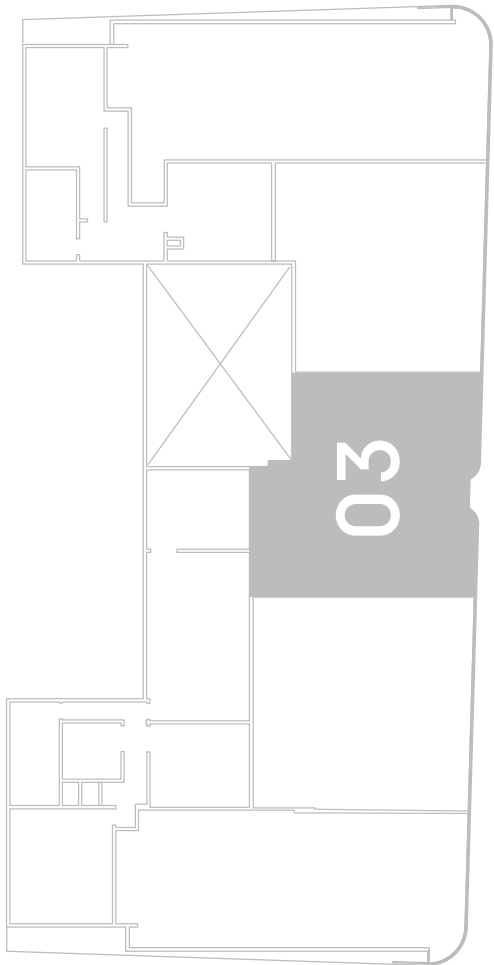
5 BEDROOMS
6.5 BATHROOMS
AND DEN



BISCAYNE BAY



BISCAYNE BAY



BISCAYNE BAY



Stated square footages and dimensions are measured to the exterior boundaries of the exterior walls and the centerline of interior demising walls and in fact vary from the square footage and dimensions that would be determined by using the description and definition of the "Unit" set forth in the Declaration (which generally only includes the interior airspace between the perimeter walls and excludes all interior structural components and other common elements). For your reference, the area of the Unit, determined in accordance with these defined unit boundaries, is as set forth on Exhibit "3" to the Declaration of Condominium contained in the Prospectus. Measurements of rooms set forth on this floor plan are generally taken at the farthest points of each given room (as if the room were a perfect rectangle), without regard for any cutouts or variations. Accordingly, the area of the actual room will typically be smaller than the product obtained by multiplying the stated length and width. All dimensions are estimates which will vary with actual construction, and all floor plans, specifications and other development plans are subject to change and will not necessarily accurately reflect the final plans and specifications for the development. All depictions of appliances, counters, soffits, floor coverings, furniture and other matters of detail, including, without limitation, items of finish and decoration, are conceptual only and are not necessarily included in each Unit. ORAL REPRESENTATIONS CANNOT BE RELIED UPON AS CORRECTLY STATING THE REPRESENTATIONS OF THE DEVELOPER. FOR CORRECT REPRESENTATIONS, REFERENCE SHOULD BE MADE TO THE DOCUMENTS REQUIRED BY SECTION 718.503, FLORIDA STATUTES, TO BE FURNISHED BY A DEVELOPER TO A BUYER OR LESSEE. These materials are not intended to be an offer to sell, or solicitation to buy a unit in the condominium. FOR NY RESIDENTS ONLY, SEE CPS-12 OFFERING PLAN FOR ADDITIONAL TERMS. FILE NO. CP18-0139. Floor plan not to scale.



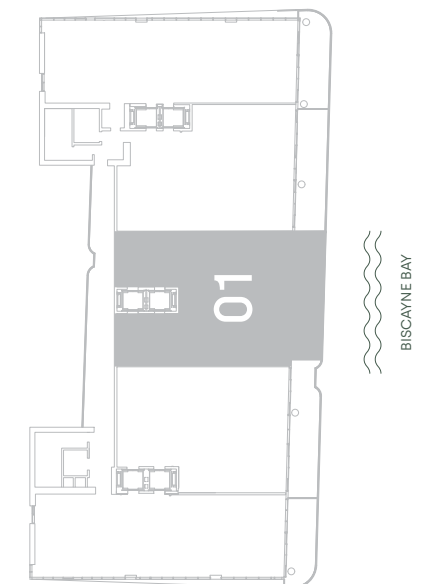
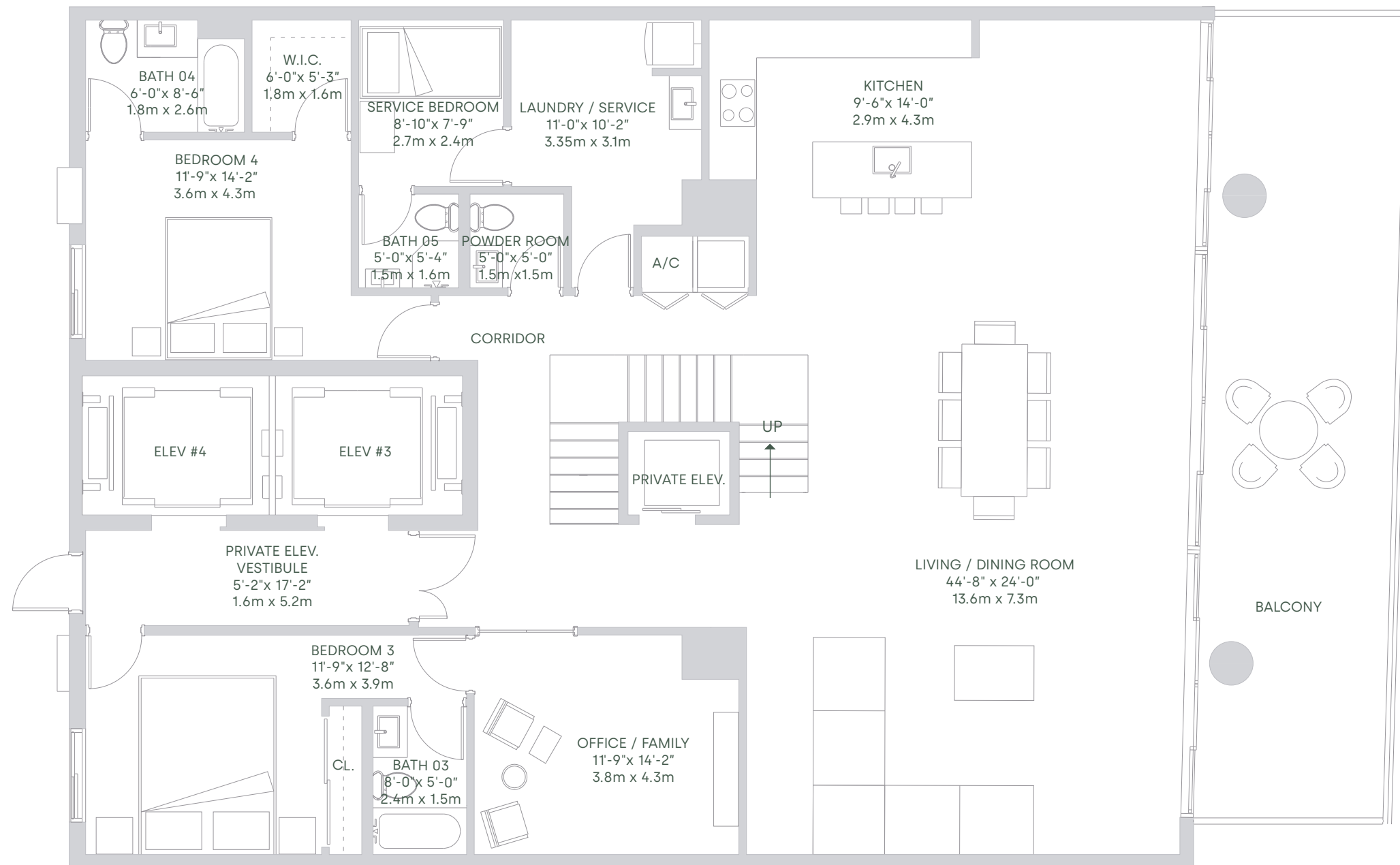
PENTHOUSES MANSIONS
LEVEL 60-62

TOTAL SQ.FT.	6,917 SQ.MT.	642 SQ.MT.
A/C AREA	5,010 SQ.FT.	465 SQ.MT.
TOTAL BALCONY/TERRACE AREA	1,907 SQ.FT.	177 SQ.MT.

PHM 03

LEVEL 01

5 BEDROOMS
6.5 BATHROOMS
AND DEN



Stated square footages and dimensions are measured to the exterior boundaries of the exterior walls and the centerline of interior demising walls and in fact vary from the square footage and dimensions that would be determined by using the description and definition of the "Unit" set forth in the Declaration (which generally only includes the interior airspace between the perimeter walls and excludes all interior structural components and other common elements). For your reference, the area of the Unit, determined in accordance with these defined unit boundaries, is as set forth on Exhibit "3" to the Declaration of Condominium contained in the Prospectus. Measurements of rooms set forth on this floor plan are generally taken at the farthest points of each given room (as if the room were a perfect rectangle), without regard for any cutouts or variations. Accordingly, the area of the actual room will typically be smaller than the product obtained by multiplying the stated length and width. All dimensions are estimates which will vary with actual construction, and all floor plans, specifications and other development plans are subject to change and will not necessarily accurately reflect the final plans and specifications for the development. All depictions of appliances, counters, soffits, floor coverings, furniture and other matters of detail, including, without limitation, items of finish and decoration, are conceptual only and are not necessarily included in each Unit. ORAL REPRESENTATIONS CANNOT BE RELIED UPON AS CORRECTLY STATING THE REPRESENTATIONS OF THE DEVELOPER. FOR CORRECT REPRESENTATIONS, REFERENCE SHOULD BE MADE TO THE DOCUMENTS REQUIRED BY SECTION 718.503, FLORIDA STATUTES, TO BE FURNISHED BY A DEVELOPER TO A BUYER OR LESSEE. These materials are not intended to be an offer to sell, or solicitation to buy a unit in the condominium. FOR NY RESIDENTS ONLY, SEE CPS-12 OFFERING PLAN FOR ADDITIONAL TERMS. FILE NO. CP18-0139. Floor plan not to scale.



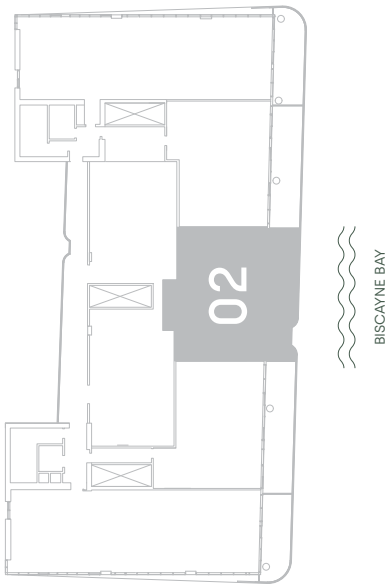
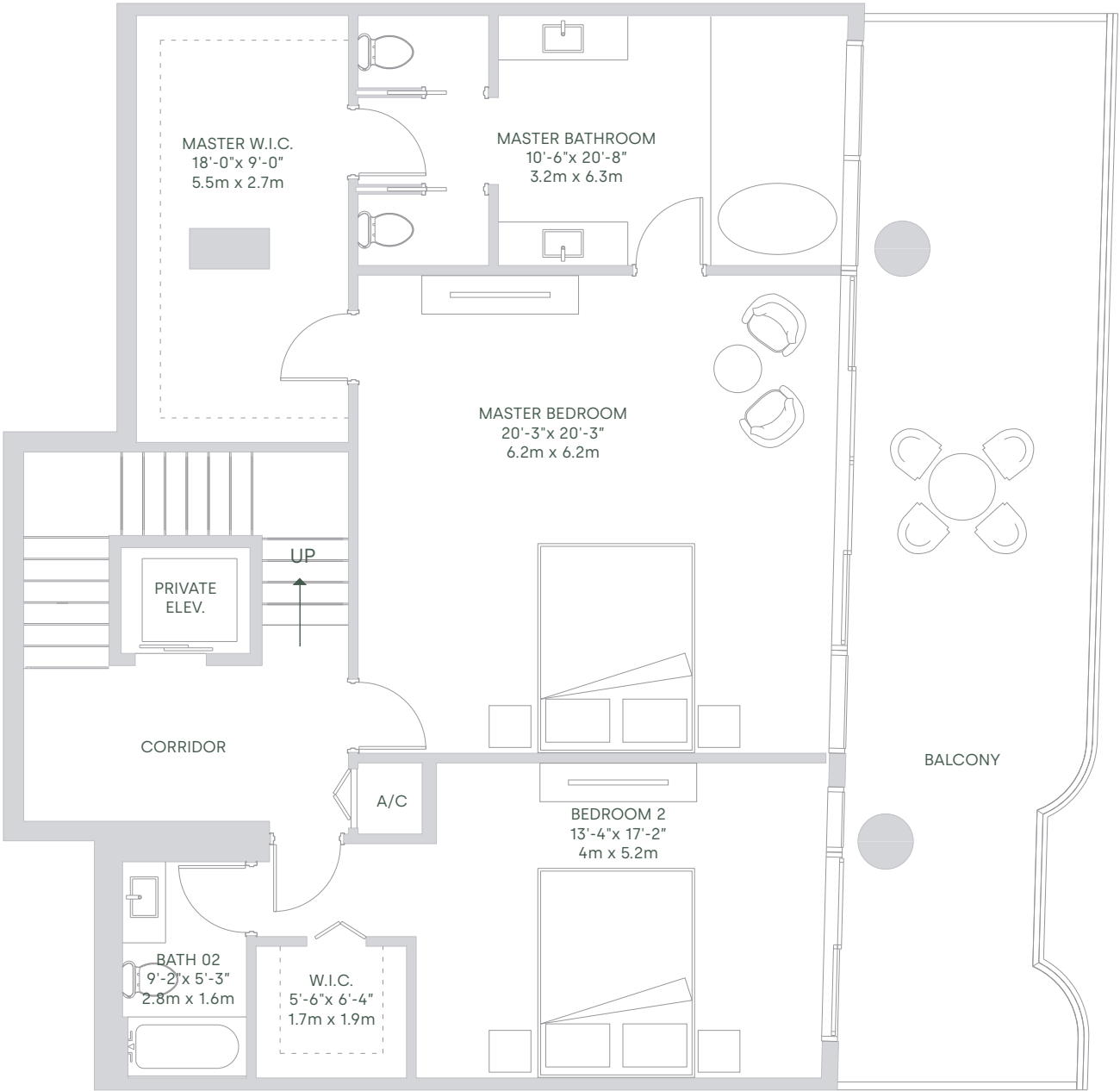
PENTHOUSES MANSIONS
LEVEL 60-62

TOTAL SQ.FT.	6,917 SQ.MT.	642 SQ.MT.
A/C AREA	5,010 SQ.FT.	465 SQ.MT.
TOTAL BALCONY/TERRACE AREA	1,907 SQ.FT.	177 SQ.MT.

PHM 03

LEVEL 02

5 BEDROOMS
6.5 BATHROOMS
AND DEN



Stated square footages and dimensions are measured to the exterior boundaries of the exterior walls and the centerline of interior demising walls and in fact vary from the square footage and dimensions that would be determined by using the description and definition of the "Unit" set forth in the Declaration (which generally only includes the interior airspace between the perimeter walls and excludes all interior structural components and other common elements). For your reference, the area of the Unit, determined in accordance with these defined unit boundaries, is as set forth on Exhibit "3" to the Declaration of Condominium contained in the Prospectus. Measurements of rooms set forth on this floor plan are generally taken at the farthest points of each given room (as if the room were a perfect rectangle), without regard for any cutouts or variations. Accordingly, the area of the actual room will typically be smaller than the product obtained by multiplying the stated length and width. All dimensions are estimates which will vary with actual construction, and all floor plans, specifications and other development plans are subject to change and will not necessarily accurately reflect the final plans and specifications for the development. All depictions of appliances, counters, soffits, floor coverings, furniture and other matters of detail, including, without limitation, items of finish and decoration, are conceptual only and are not necessarily included in each Unit. ORAL REPRESENTATIONS CANNOT BE RELIED UPON AS CORRECTLY STATING THE REPRESENTATIONS OF THE DEVELOPER. FOR CORRECT REPRESENTATIONS, REFERENCE SHOULD BE MADE TO THE DOCUMENTS REQUIRED BY SECTION 718.503, FLORIDA STATUTES, TO BE FURNISHED BY A DEVELOPER TO A BUYER OR LESSEE. These materials are not intended to be an offer to sell, or solicitation to buy a unit in the condominium. FOR NY RESIDENTS ONLY, SEE CPS-12 OFFERING PLAN FOR ADDITIONAL TERMS. FILE NO. CP18-0139. Floor plan not to scale.



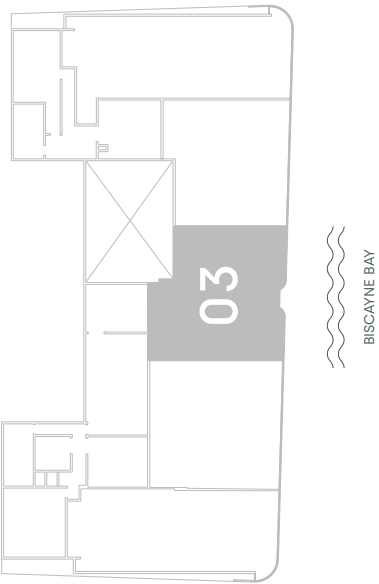
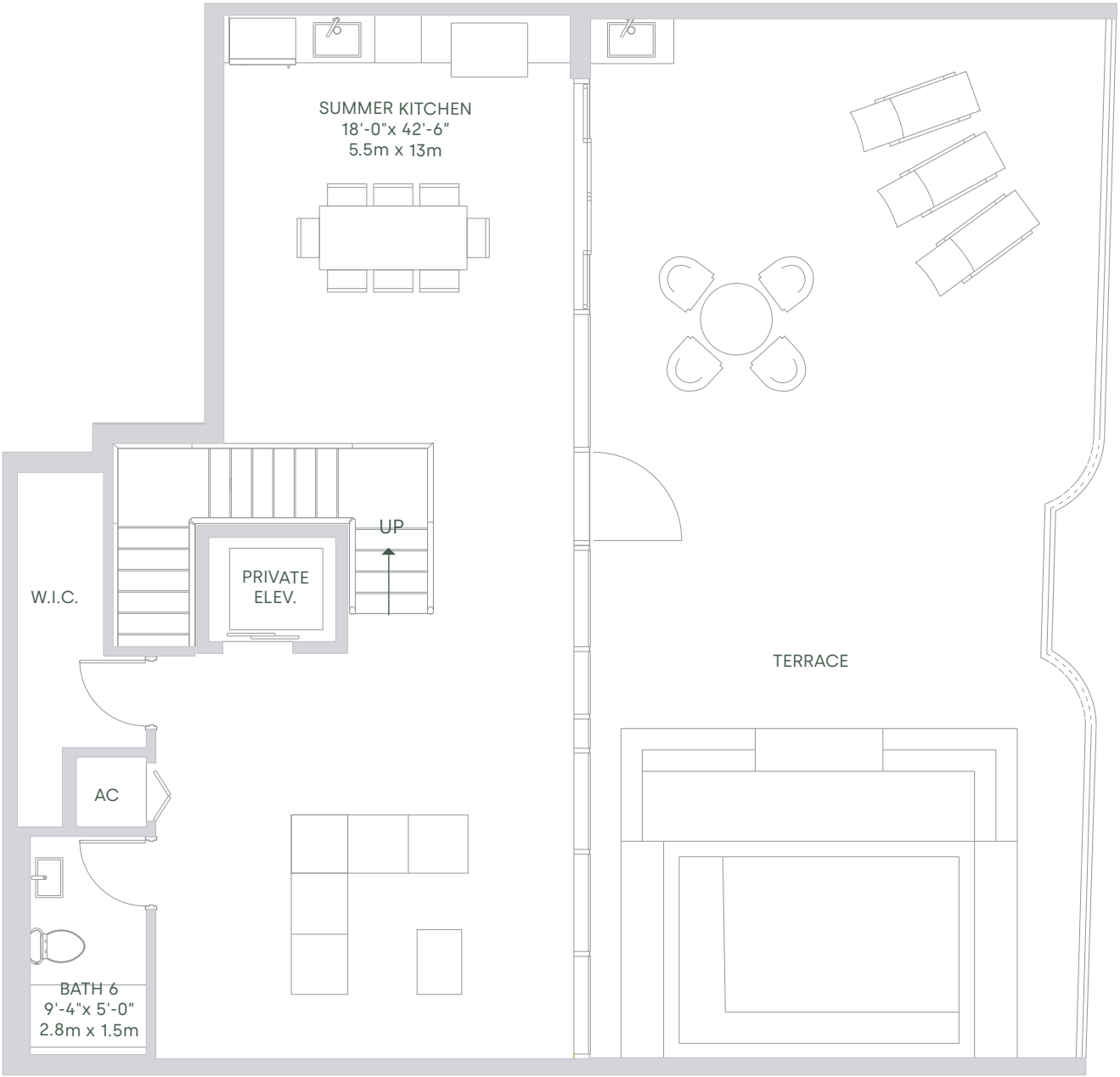
PENTHOUSES MANSIONS
LEVEL 60-62

TOTAL SQ.FT.	6,917 SQ.MT.	642 SQ.MT.
A/C AREA	5,010 SQ.FT.	465 SQ.MT.
TOTAL BALCONY/TERRACE AREA	1,907 SQ.FT.	177 SQ.MT.

PHM 03

LEVEL 03

5 BEDROOMS
6.5 BATHROOMS
AND DEN



Stated square footages and dimensions are measured to the exterior boundaries of the exterior walls and the centerline of interior demising walls and in fact vary from the square footage and dimensions that would be determined by using the description and definition of the "Unit" set forth in the Declaration (which generally only includes the interior airspace between the perimeter walls and excludes all interior structural components and other common elements). For your reference, the area of the Unit, determined in accordance with these defined unit boundaries, is as set forth on Exhibit "3" to the Declaration of Condominium contained in the Prospectus. Measurements of rooms set forth on this floor plan are generally taken at the farthest points of each given room (as if the room were a perfect rectangle), without regard for any cutouts or variations. Accordingly, the area of the actual room will typically be smaller than the product obtained by multiplying the stated length and width. All dimensions are estimates which will vary with actual construction, and all floor plans, specifications and other development plans are subject to change and will not necessarily accurately reflect the final plans and specifications for the development. All depictions of appliances, counters, soffits, floor coverings, furniture and other matters of detail, including, without limitation, items of finish and decoration, are conceptual only and are not necessarily included in each Unit. ORAL REPRESENTATIONS CANNOT BE RELIED UPON AS CORRECTLY STATING THE REPRESENTATIONS OF THE DEVELOPER. FOR CORRECT REPRESENTATIONS, REFERENCE SHOULD BE MADE TO THE DOCUMENTS REQUIRED BY SECTION 718.503, FLORIDA STATUTES, TO BE FURNISHED BY A DEVELOPER TO A BUYER OR LESSEE. These materials are not intended to be an offer to sell, or solicitation to buy a unit in the condominium. FOR NY RESIDENTS ONLY, SEE CPS-12 OFFERING PLAN FOR ADDITIONAL TERMS. FILE NO. CP18-0139. Floor plan not to scale.



PENTHOUSE MANSIONS
PHM 04

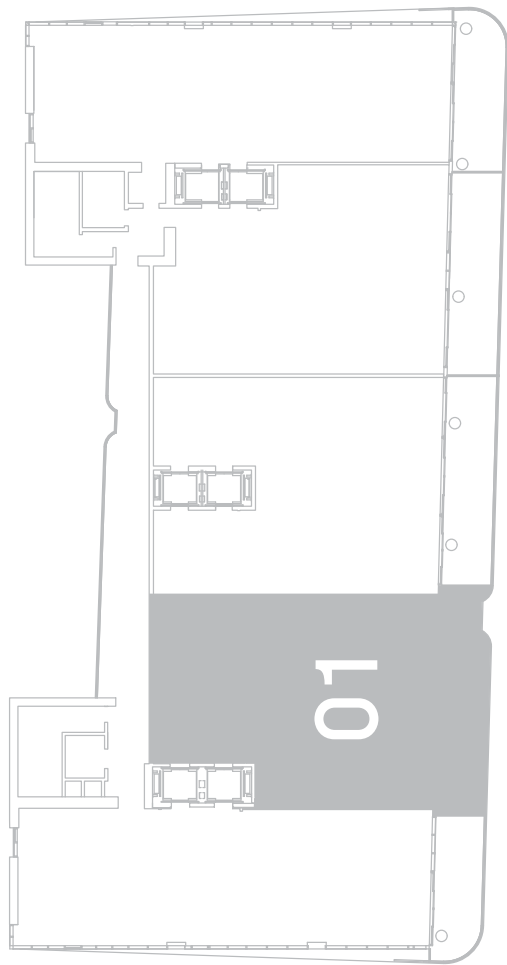


PENTHOUSES MANSIONS
LEVEL 60-62

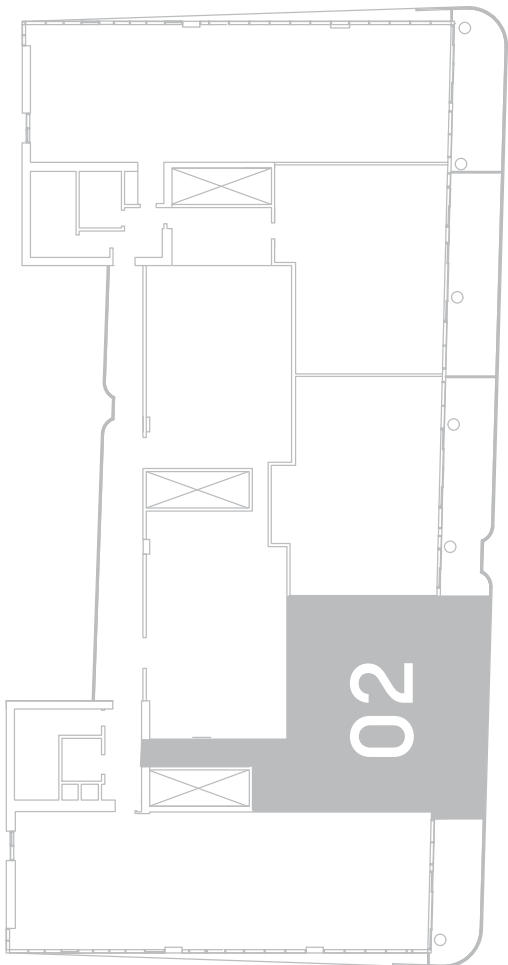
TOTAL SQ.FT.	6,906 SQ.MT.	641 SQ.MT.
A/C AREA	4,795 SQ.FT.	445 SQ.MT.
TOTAL BALCONY/TERRACE AREA	2,111 SQ.FT.	196 SQ.MT.

PHM 04

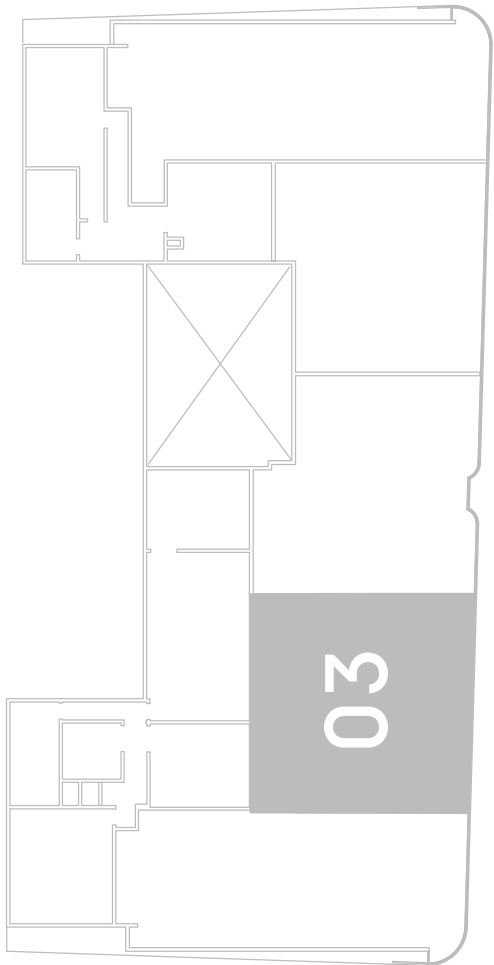
4 BEDROOMS
6.5 BATHROOMS
AND DEN



BISCAYNE BAY



BISCAYNE BAY



BISCAYNE BAY



Stated square footages and dimensions are measured to the exterior boundaries of the exterior walls and the centerline of interior demising walls and in fact vary from the square footage and dimensions that would be determined by using the description and definition of the "Unit" set forth in the Declaration (which generally only includes the interior airspace between the perimeter walls and excludes all interior structural components and other common elements). For your reference, the area of the Unit, determined in accordance with these defined unit boundaries, is as set forth on Exhibit "3" to the Declaration of Condominium contained in the Prospectus. Measurements of rooms set forth on this floor plan are generally taken at the farthest points of each given room (as if the room were a perfect rectangle), without regard for any cutouts or variations. Accordingly, the area of the actual room will typically be smaller than the product obtained by multiplying the stated length and width. All dimensions are estimates which will vary with actual construction, and all floor plans, specifications and other development plans are subject to change and will not necessarily accurately reflect the final plans and specifications for the development. All depictions of appliances, counters, soffits, floor coverings, furniture and other matters of detail, including, without limitation, items of finish and decoration, are conceptual only and are not necessarily included in each Unit. ORAL REPRESENTATIONS CANNOT BE RELIED UPON AS CORRECTLY STATING THE REPRESENTATIONS OF THE DEVELOPER. FOR CORRECT REPRESENTATIONS, REFERENCE SHOULD BE MADE TO THE DOCUMENTS REQUIRED BY SECTION 718.503, FLORIDA STATUTES, TO BE FURNISHED BY A DEVELOPER TO A BUYER OR LESSEE. These materials are not intended to be an offer to sell, or solicitation to buy a unit in the condominium. FOR NY RESIDENTS ONLY, SEE CPS-12 OFFERING PLAN FOR ADDITIONAL TERMS. FILE NO. CP18-0139. Floor plan not to scale.



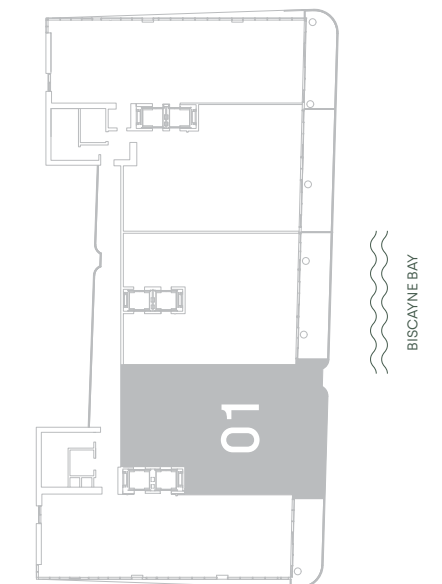
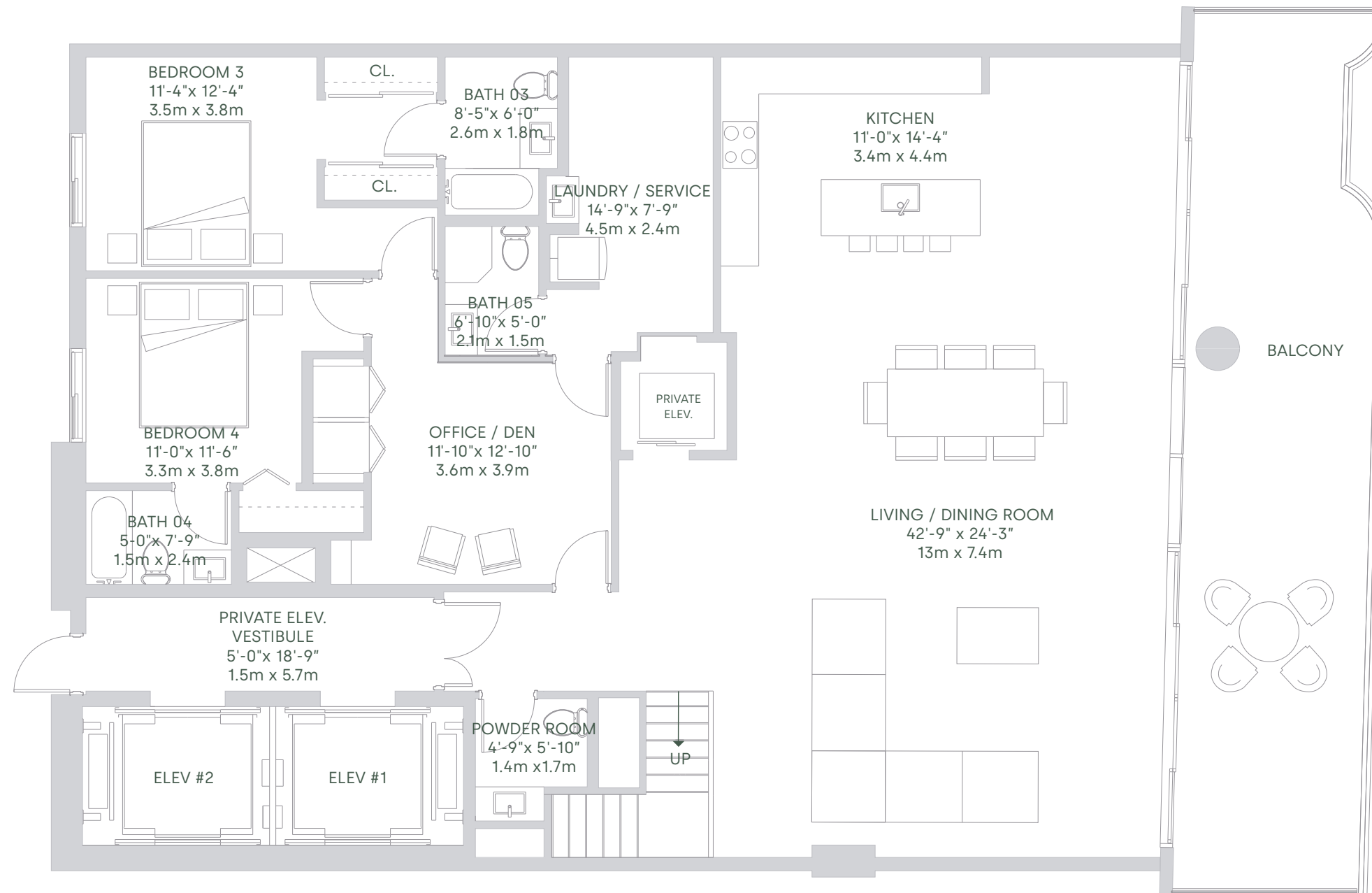
PENTHOUSES MANSIONS
LEVEL 60-62

TOTAL SQ.FT.	6,906 SQ.MT.	641 SQ.MT.
A/C AREA	4,795 SQ.FT.	445 SQ.MT.
TOTAL BALCONY/TERRACE AREA	2,111 SQ.FT.	196 SQ.MT.

PHM 04

LEVEL 01

4 BEDROOMS
6.5 BATHROOMS
AND DEN



Stated square footages and dimensions are measured to the exterior boundaries of the exterior walls and the centerline of interior demising walls and in fact vary from the square footage and dimensions that would be determined by using the description and definition of the "Unit" set forth in the Declaration (which generally only includes the interior airspace between the perimeter walls and excludes all interior structural components and other common elements). For your reference, the area of the Unit, determined in accordance with these defined unit boundaries, is as set forth on Exhibit "3" to the Declaration of Condominium contained in the Prospectus. Measurements of rooms set forth on this floor plan are generally taken at the farthest points of each given room (as if the room were a perfect rectangle), without regard for any cutouts or variations. Accordingly, the area of the actual room will typically be smaller than the product obtained by multiplying the stated length and width. All dimensions are estimates which will vary with actual construction, and all floor plans, specifications and other development plans are subject to change and will not necessarily accurately reflect the final plans and specifications for the development. All depictions of appliances, counters, soffits, floor coverings, furniture and other matters of detail, including, without limitation, items of finish and decoration, are conceptual only and are not necessarily included in each Unit. ORAL REPRESENTATIONS CANNOT BE RELIED UPON AS CORRECTLY STATING THE REPRESENTATIONS OF THE DEVELOPER. FOR CORRECT REPRESENTATIONS, REFERENCE SHOULD BE MADE TO THE DOCUMENTS REQUIRED BY SECTION 718.503, FLORIDA STATUTES, TO BE FURNISHED BY A DEVELOPER TO A BUYER OR LESSEE. These materials are not intended to be an offer to sell, or solicitation to buy a unit in the condominium. FOR NY RESIDENTS ONLY, SEE CPS-12 OFFERING PLAN FOR ADDITIONAL TERMS. FILE NO. CP18-0139. Floor plan not to scale.



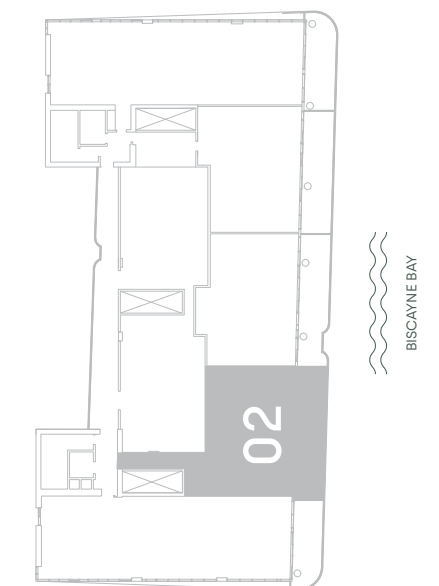
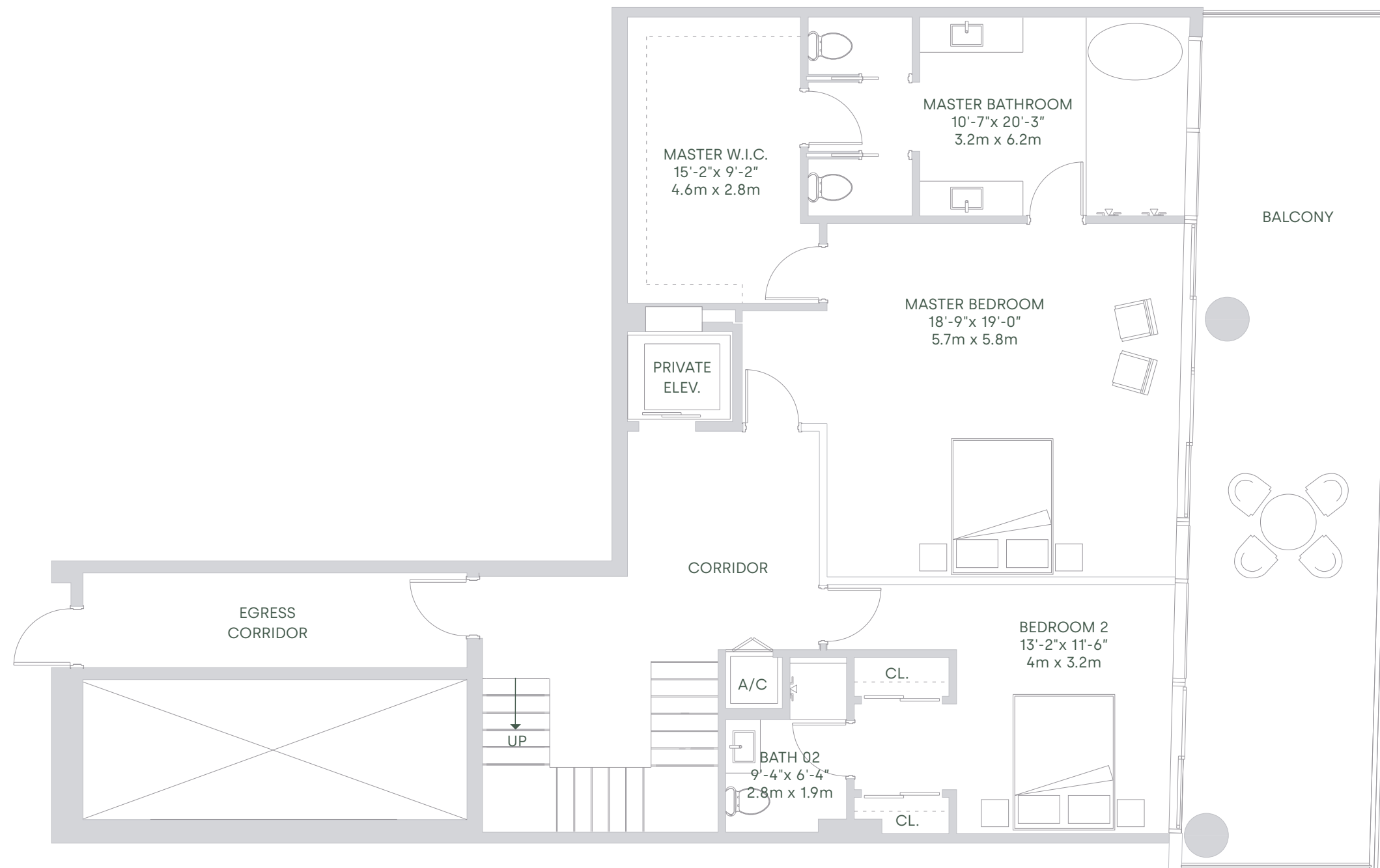
PENTHOUSES MANSIONS
LEVEL 60-62

TOTAL SQ.FT.	6,906 SQ.MT.	641 SQ.MT.
A/C AREA	4,795 SQ.FT.	445 SQ.MT.
TOTAL BALCONY/TERRACE AREA	2,111 SQ.FT.	196 SQ.MT.

PHM 04

LEVEL 02

4 BEDROOMS
6.5 BATHROOMS
AND DEN



Stated square footages and dimensions are measured to the exterior boundaries of the exterior walls and the centerline of interior demising walls and in fact vary from the square footage and dimensions that would be determined by using the description and definition of the "Unit" set forth in the Declaration (which generally only includes the interior airspace between the perimeter walls and excludes all interior structural components and other common elements). For your reference, the area of the Unit, determined in accordance with these defined unit boundaries, is as set forth on Exhibit "3" to the Declaration of Condominium contained in the Prospectus. Measurements of rooms set forth on this floor plan are generally taken at the farthest points of each given room (as if the room were a perfect rectangle), without regard for any cutouts or variations. Accordingly, the area of the actual room will typically be smaller than the product obtained by multiplying the stated length and width. All dimensions are estimates which will vary with actual construction, and all floor plans, specifications and other development plans are subject to change and will not necessarily accurately reflect the final plans and specifications for the development. All depictions of appliances, counters, soffits, floor coverings, furniture and other matters of detail, including, without limitation, items of finish and decoration, are conceptual only and are not necessarily included in each Unit. ORAL REPRESENTATIONS CANNOT BE RELIED UPON AS CORRECTLY STATING THE REPRESENTATIONS OF THE DEVELOPER. FOR CORRECT REPRESENTATIONS, REFERENCE SHOULD BE MADE TO THE DOCUMENTS REQUIRED BY SECTION 718.503, FLORIDA STATUTES, TO BE FURNISHED BY A DEVELOPER TO A BUYER OR LESSEE. These materials are not intended to be an offer to sell, or solicitation to buy a unit in the condominium. FOR NY RESIDENTS ONLY, SEE CPS-12 OFFERING PLAN FOR ADDITIONAL TERMS. FILE NO. CP18-0139. Floor plan not to scale.

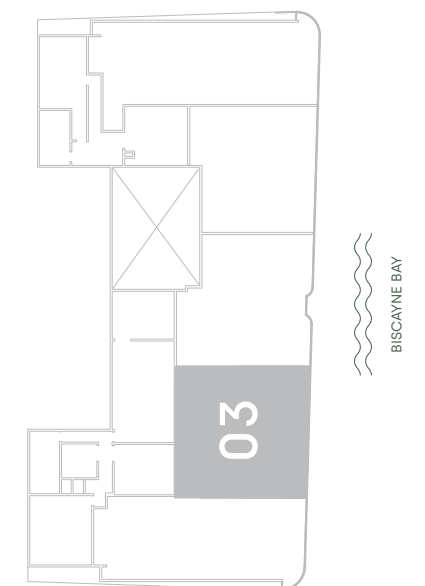
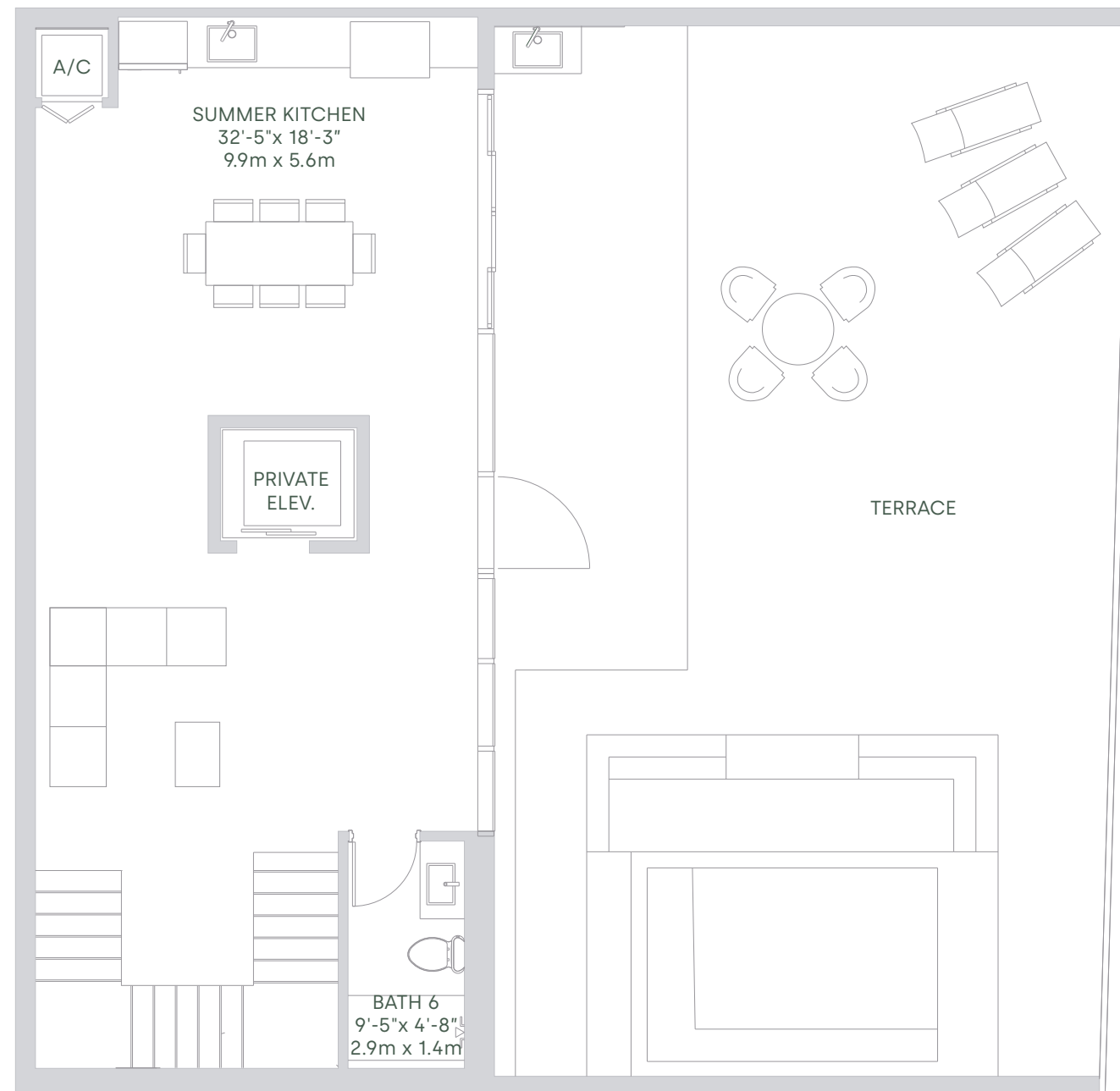


PENTHOUSES MANSIONS
LEVEL 60-62

TOTAL SQ.FT.	6,906 SQ.MT.	641 SQ.MT.
A/C AREA	4,795 SQ.FT.	445 SQ.MT.
TOTAL BALCONY/TERRACE AREA	2,111 SQ.FT.	196 SQ.MT.

PHM 04
LEVEL 03

4 BEDROOMS
6.5 BATHROOMS
AND DEN



Stated square footages and dimensions are measured to the exterior boundaries of the exterior walls and the centerline of interior demising walls and in fact vary from the square footage and dimensions that would be determined by using the description and definition of the "Unit" set forth in the Declaration (which generally only includes the interior airspace between the perimeter walls and excludes all interior structural components and other common elements). For your reference, the area of the Unit, determined in accordance with these defined unit boundaries, is as set forth on Exhibit "3" to the Declaration of Condominium contained in the Prospectus. Measurements of rooms set forth on this floor plan are generally taken at the farthest points of each given room (as if the room were a perfect rectangle), without regard for any cutouts or variations. Accordingly, the area of the actual room will typically be smaller than the product obtained by multiplying the stated length and width. All dimensions are estimates which will vary with actual construction, and all floor plans, specifications and other development plans are subject to change and will not necessarily accurately reflect the final plans and specifications for the development. All depictions of appliances, counters, soffits, floor coverings, furniture and other matters of detail, including, without limitation, items of finish and decoration, are conceptual only and are not necessarily included in each Unit. ORAL REPRESENTATIONS CANNOT BE RELIED UPON AS CORRECTLY STATING THE REPRESENTATIONS OF THE DEVELOPER. FOR CORRECT REPRESENTATIONS, REFERENCE SHOULD BE MADE TO THE DOCUMENTS REQUIRED BY SECTION 718.503, FLORIDA STATUTES, TO BE FURNISHED BY A DEVELOPER TO A BUYER OR LESSEE. These materials are not intended to be an offer to sell, or solicitation to buy a unit in the condominium. FOR NY RESIDENTS ONLY, SEE CPS-12 OFFERING PLAN FOR ADDITIONAL TERMS. FILE NO. CP18-0139. Floor plan not to scale.



PENTHOUSE MANSIONS
PHM 05

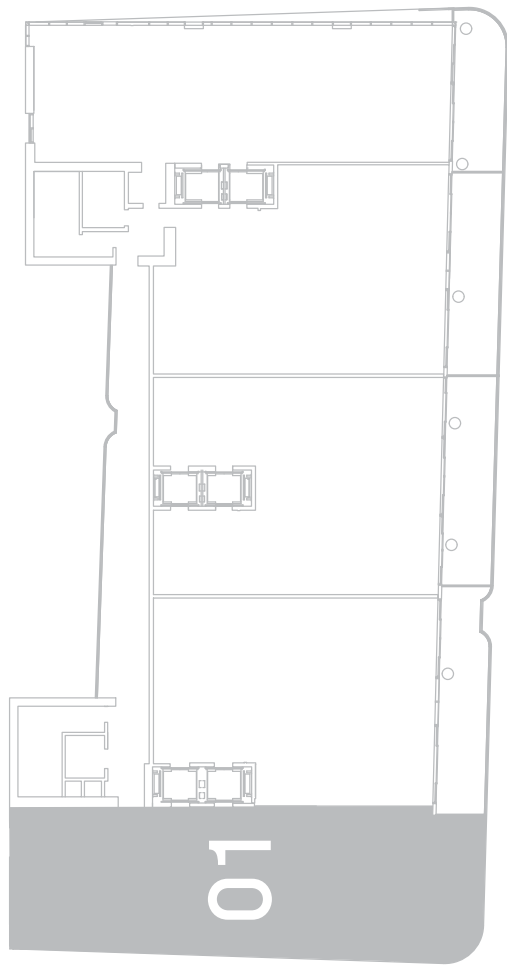


PENTHOUSES MANSIONS
LEVEL 60-62

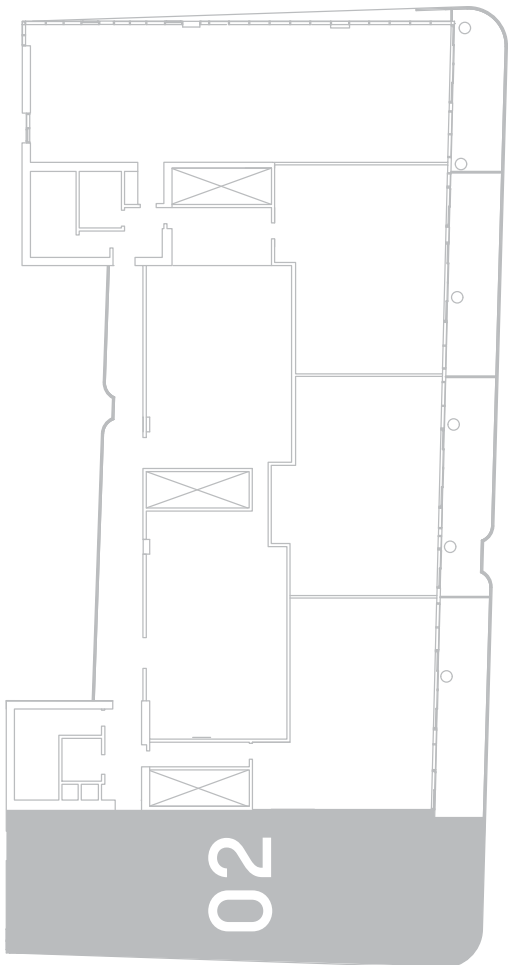
TOTAL SQ.FT.	7,850 SQ.MT.	729 SQ.MT.
A/C AREA	6,046 SQ.FT.	562 SQ.MT.
TOTAL BALCONY/TERRACE AREA	1,804 SQ.FT.	167 SQ.MT.

PHM 05

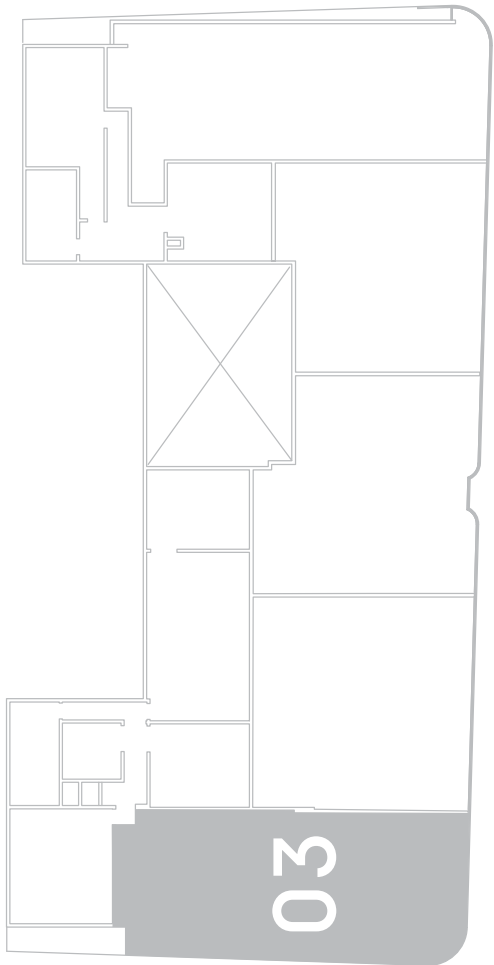
6 BEDROOMS
7.5 BATHROOMS
AND DEN/GYM



BISCAYNE BAY



BISCAYNE BAY



BISCAYNE BAY



Stated square footages and dimensions are measured to the exterior boundaries of the exterior walls and the centerline of interior demising walls and in fact vary from the square footage and dimensions that would be determined by using the description and definition of the "Unit" set forth in the Declaration (which generally only includes the interior airspace between the perimeter walls and excludes all interior structural components and other common elements). For your reference, the area of the Unit, determined in accordance with these defined unit boundaries, is as set forth on Exhibit "3" to the Declaration of Condominium contained in the Prospectus. Measurements of rooms set forth on this floor plan are generally taken at the farthest points of each given room (as if the room were a perfect rectangle), without regard for any cutouts or variations. Accordingly, the area of the actual room will typically be smaller than the product obtained by multiplying the stated length and width. All dimensions are estimates which will vary with actual construction, and all floor plans, specifications and other development plans are subject to change and will not necessarily accurately reflect the final plans and specifications for the development. All depictions of appliances, counters, soffits, floor coverings, furniture and other matters of detail, including, without limitation, items of finish and decoration, are conceptual only and are not necessarily included in each Unit. ORAL REPRESENTATIONS CANNOT BE RELIED UPON AS CORRECTLY STATING THE REPRESENTATIONS OF THE DEVELOPER. FOR CORRECT REPRESENTATIONS, REFERENCE SHOULD BE MADE TO THE DOCUMENTS REQUIRED BY SECTION 718.503, FLORIDA STATUTES, TO BE FURNISHED BY A DEVELOPER TO A BUYER OR LESSEE. These materials are not intended to be an offer to sell, or solicitation to buy a unit in the condominium. FOR NY RESIDENTS ONLY, SEE CPS-12 OFFERING PLAN FOR ADDITIONAL TERMS. FILE NO. CP18-0139. Floor plan not to scale.



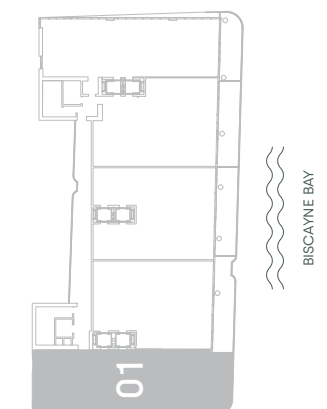
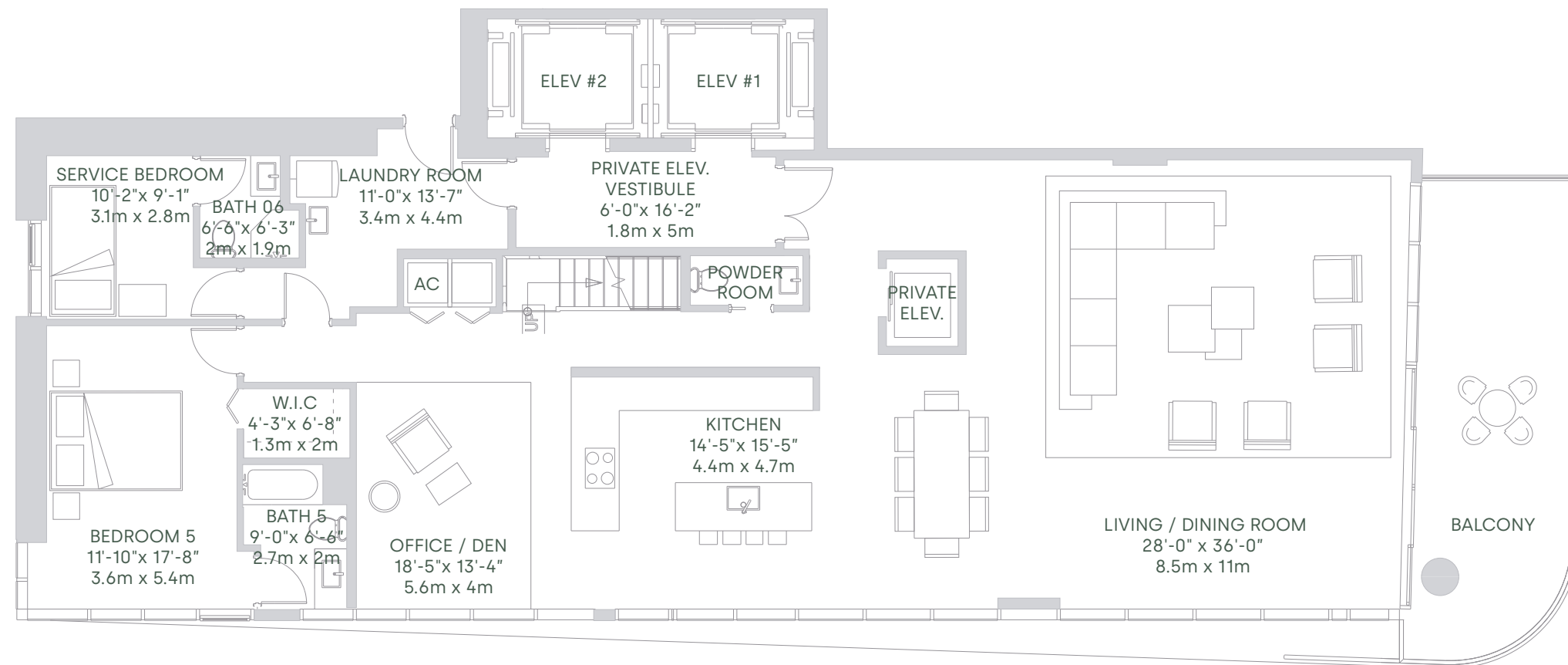
PENTHOUSES MANSIONS
LEVEL 60-62

TOTAL SQ.FT.	7,850 SQ.MT.	729 SQ.MT.
A/C AREA	6,046 SQ.FT.	562 SQ.MT.
TOTAL BALCONY/TERRACE AREA	1,804 SQ.FT.	167 SQ.MT.

PHM 05

LEVEL 01

6 BEDROOMS
7.5 BATHROOMS
AND DEN/GYM



Stated square footages and dimensions are measured to the exterior boundaries of the exterior walls and the centerline of interior demising walls and in fact vary from the square footage and dimensions that would be determined by using the description and definition of the "Unit" set forth in the Declaration (which generally only includes the interior airspace between the perimeter walls and excludes all interior structural components and other common elements). For your reference, the area of the Unit, determined in accordance with these defined unit boundaries, is as set forth on Exhibit "3" to the Declaration of Condominium contained in the Prospectus. Measurements of rooms set forth on this floor plan are generally taken at the farthest points of each given room (as if the room were a perfect rectangle), without regard for any cutouts or variations. Accordingly, the area of the actual room will typically be smaller than the product obtained by multiplying the stated length and width. All dimensions are estimates which will vary with actual construction, and all floor plans, specifications and other development plans are subject to change and will not necessarily accurately reflect the final plans and specifications for the development. All depictions of appliances, counters, soffits, floor coverings, furniture and other matters of detail, including, without limitation, items of finish and decoration, are conceptual only and are not necessarily included in each Unit. ORAL REPRESENTATIONS CANNOT BE RELIED UPON AS CORRECTLY STATING THE REPRESENTATIONS OF THE DEVELOPER. FOR CORRECT REPRESENTATIONS, REFERENCE SHOULD BE MADE TO THE DOCUMENTS REQUIRED BY SECTION 718.503, FLORIDA STATUTES, TO BE FURNISHED BY A DEVELOPER TO A BUYER OR LESSEE. These materials are not intended to be an offer to sell, or solicitation to buy a unit in the condominium. FOR NY RESIDENTS ONLY, SEE CPS-12 OFFERING PLAN FOR ADDITIONAL TERMS. FILE NO. CP18-0139. Floor plan not to scale.



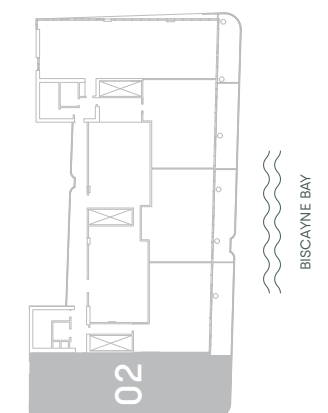
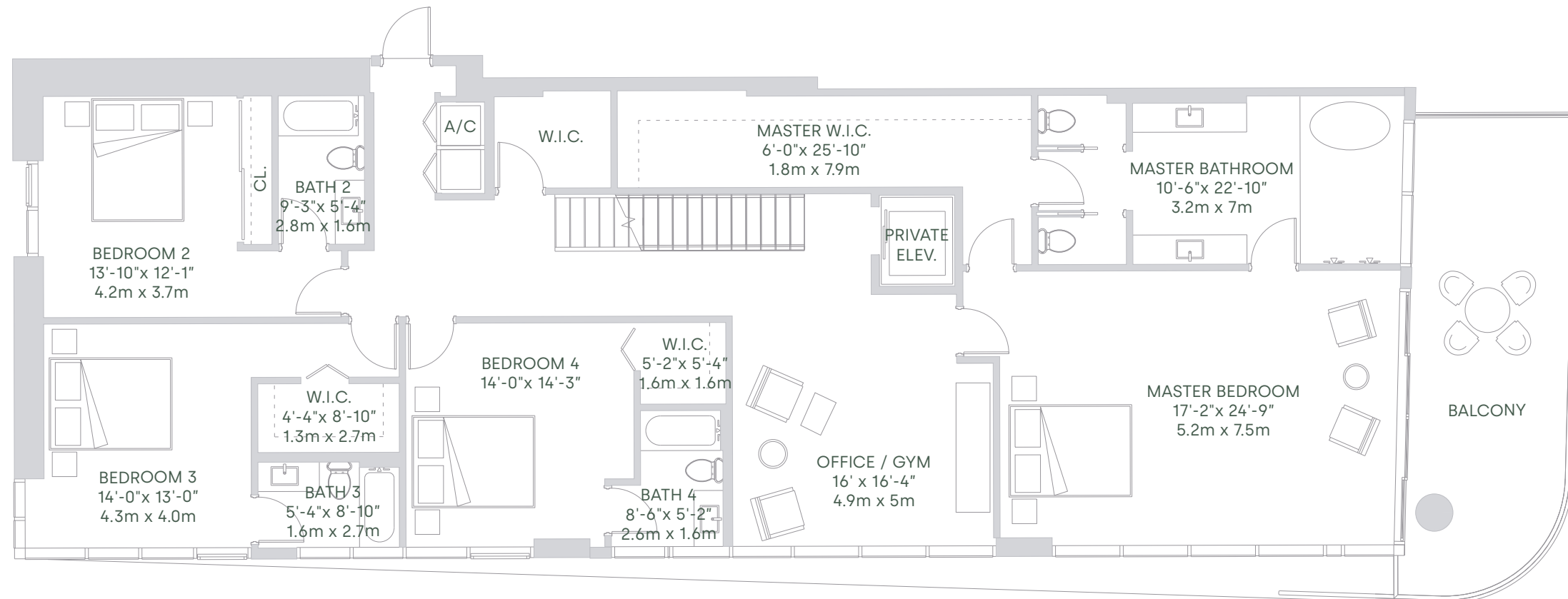
PENTHOUSES MANSIONS
LEVEL 60-62

TOTAL SQ.FT.	7,850 SQ.MT.	729 SQ.MT.
A/C AREA	6,046 SQ.FT.	562 SQ.MT.
TOTAL BALCONY/TERRACE AREA	1,804 SQ.FT.	167 SQ.MT.

PHM 05

LEVEL 02

6 BEDROOMS
7.5 BATHROOMS
AND DEN/GYM



Stated square footages and dimensions are measured to the exterior boundaries of the exterior walls and the centerline of interior demising walls and in fact vary from the square footage and dimensions that would be determined by using the description and definition of the "Unit" set forth in the Declaration (which generally only includes the interior airspace between the perimeter walls and excludes all interior structural components and other common elements). For your reference, the area of the Unit, determined in accordance with these defined unit boundaries, is as set forth on Exhibit "3" to the Declaration of Condominium contained in the Prospectus. Measurements of rooms set forth on this floor plan are generally taken at the farthest points of each given room (as if the room were a perfect rectangle), without regard for any cutouts or variations. Accordingly, the area of the actual room will typically be smaller than the product obtained by multiplying the stated length and width. All dimensions are estimates which will vary with actual construction, and all floor plans, specifications and other development plans are subject to change and will not necessarily accurately reflect the final plans and specifications for the development. All depictions of appliances, counters, soffits, floor coverings, furniture and other matters of detail, including, without limitation, items of finish and decoration, are conceptual only and are not necessarily included in each Unit. ORAL REPRESENTATIONS CANNOT BE RELIED UPON AS CORRECTLY STATING THE REPRESENTATIONS OF THE DEVELOPER. FOR CORRECT REPRESENTATIONS, REFERENCE SHOULD BE MADE TO THE DOCUMENTS REQUIRED BY SECTION 718.503, FLORIDA STATUTES, TO BE FURNISHED BY A DEVELOPER TO A BUYER OR LESSEE. These materials are not intended to be an offer to sell, or solicitation to buy a unit in the condominium. FOR NY RESIDENTS ONLY, SEE CPS-12 OFFERING PLAN FOR ADDITIONAL TERMS. FILE NO. CP18-0139. Floor plan not to scale.



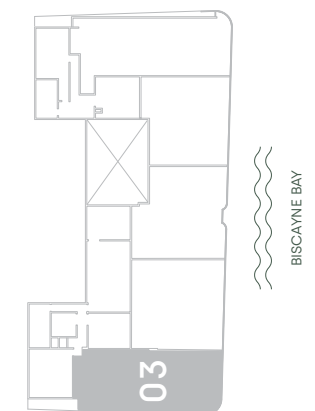
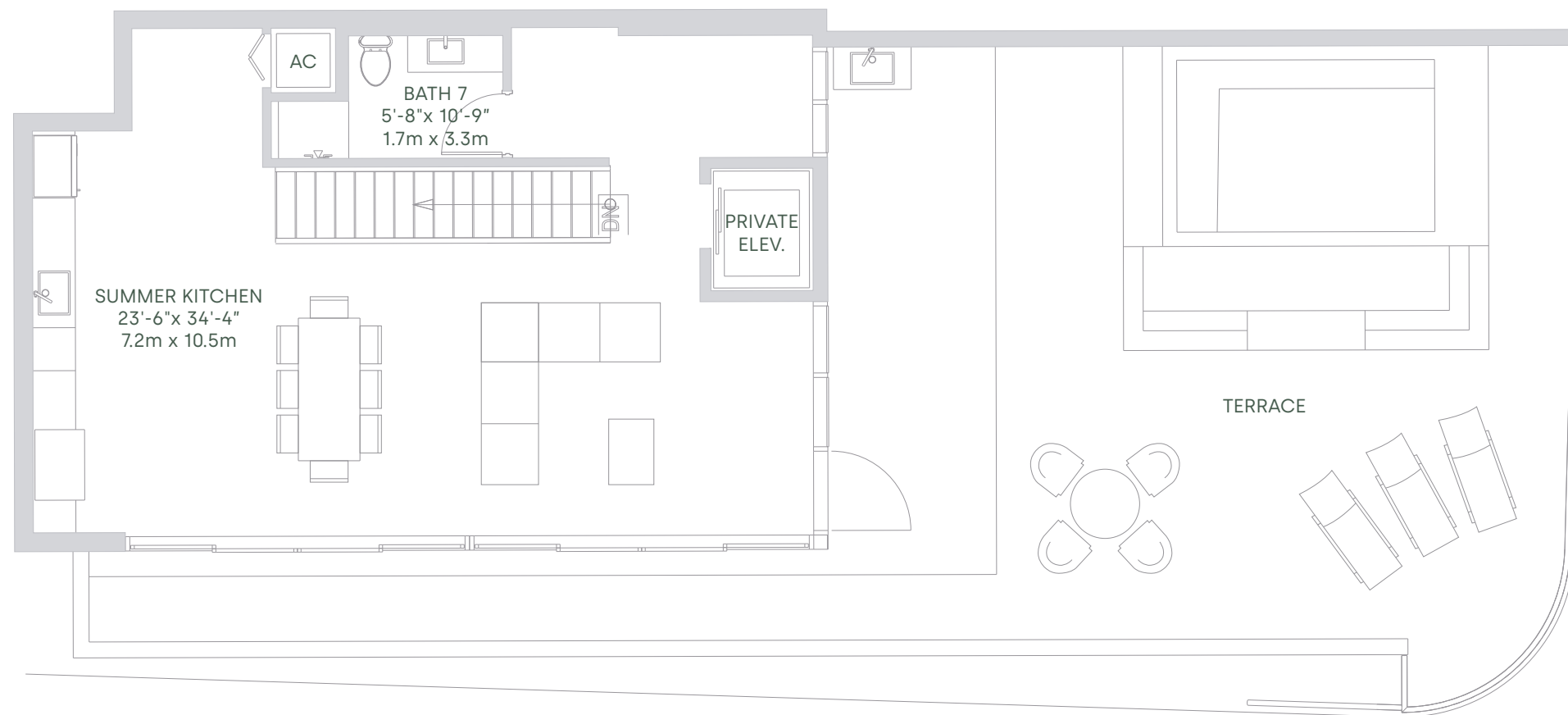
PENTHOUSES MANSIONS
LEVEL 60-62

TOTAL SQ.FT.	7,850 SQ.MT.	729 SQ.MT.
A/C AREA	6,046 SQ.FT.	562 SQ.MT.
TOTAL BALCONY/TERRACE AREA	1,804 SQ.FT.	167 SQ.MT.

PHM 05

LEVEL 03

6 BEDROOMS
7.5 BATHROOMS
AND DEN/GYM



Stated square footages and dimensions are measured to the exterior boundaries of the exterior walls and the centerline of interior demising walls and in fact vary from the square footage and dimensions that would be determined by using the description and definition of the "Unit" set forth in the Declaration (which generally only includes the interior airspace between the perimeter walls and excludes all interior structural components and other common elements). For your reference, the area of the Unit, determined in accordance with these defined unit boundaries, is as set forth on Exhibit "3" to the Declaration of Condominium contained in the Prospectus. Measurements of rooms set forth on this floor plan are generally taken at the farthest points of each given room (as if the room were a perfect rectangle), without regard for any cutouts or variations. Accordingly, the area of the actual room will typically be smaller than the product obtained by multiplying the stated length and width. All dimensions are estimates which will vary with actual construction, and all floor plans, specifications and other development plans are subject to change and will not necessarily accurately reflect the final plans and specifications for the development. All depictions of appliances, counters, soffits, floor coverings, furniture and other matters of detail, including, without limitation, items of finish and decoration, are conceptual only and are not necessarily included in each Unit. ORAL REPRESENTATIONS CANNOT BE RELIED UPON AS CORRECTLY STATING THE REPRESENTATIONS OF THE DEVELOPER. FOR CORRECT REPRESENTATIONS, REFERENCE SHOULD BE MADE TO THE DOCUMENTS REQUIRED BY SECTION 718.503, FLORIDA STATUTES, TO BE FURNISHED BY A DEVELOPER TO A BUYER OR LESSEE. These materials are not intended to be an offer to sell, or solicitation to buy a unit in the condominium. FOR NY RESIDENTS ONLY, SEE CPS-12 OFFERING PLAN FOR ADDITIONAL TERMS. FILE NO. CP18-0139. Floor plan not to scale.